

Export
10
Top Ten China Export Brands

Whole House Custom
10
Top Ten China Whole-House Custom Furniture Brands

Cupboard
10
Top Ten China Cabinetry Brands

Brand on the list "Global Figures"

Tel/Whats/Wechat: +86 138-8992-2422

Website: www.pakitchen.com

E-mail: info@pakitchen.com

Guangdong Baishan Furniture Co., Ltd.
Foshan PA Furniture Co., Ltd.

Marketing Headquarters: Bld 7, Meiju IBME Center, Foshan, China
China factory: No.16 Hegui Rd. Nanhai, Foshan, China
Indonesia factory: No.5 Batusari, Tangerang, Indonesia



Wechat



Whatsapp



Where there is HOME, there is PA KITCHEN!

CCTV 1 **CCTV 2** **CCTV 4** **CCTV 7** **CCTV 12**

- special edition -

PA Brand Image Ambassador:

Wang Yan



QUALITY LIFE STARTS
WITH LOVE

Top Ten Cabinetry Brands

PA Customized Whole



CONTENTS

01 Enterprise Advantages

Enterprise introduction	01
Indonesia factory	03
Development process	05
Production base	07
Production capacity	09

02 Team Strength Advantages

Team	11
Core management	13
International business management team	15
Export sales team	17
What can we do for you	19
Project support by PA	21

03 Projects System

Quality controlling system	23
Automatic production line	25
Intelligent design and production system.....	27
Smart cutting	29
Edge banding	30
Intelligent drilling	31
Smart sorting & Inspecting	32
Quality inspection procedure	33
Packing	35
Warehouse storage	37
Hardware sorting system	38
ERP System - Supply chain system	39
Top lacquer finish	40

04 Products Cooperation

Why choose PA	42
Project references	45

05 Quality Advantage

PA Particle board	119
PA MDF board	121
PA Plywood board	123
Board cutting	125
Edge banding	126
Drilling	127
Melamine	128
UV	129
PVC.....	130

Lacquer.....	131
Timber veneer	133
Hardware	134
Countertop.....	137

06 PA KITCHEN - Much more than an outstanding manufacturer

Brand introduction	139
Visual identity	141
Company culture	143
Social responsibility	145
Brand honor	146
Honor certifications	148
Qualification & Certifications	149

01

ENTERPRISE *Advantages*

PA was established in Foshan, the capital of building materials in China. The company has a production scale of more than 40,000 square meters, and the Indonesian branch factory is more than 15,000 square meters. With an international development strategy, PA has established USA, Canada, Australia, Japan, Chili, UAE, Indonesia..... and other branches, and become a global strategic buyer partner.



ENTERPRISE INTRODUCTION

15 ⁺ Experience (year)	40000 ^{m²} Factory plant	15000 ^{m²} PA Indonesia branch factory	150000 ⁺ Automatic Industry Bulk "all in-house" production
--	--------------------------------------	--	---

PA KITCHEN

Guangdong Baishan Furniture Co., Ltd (PA KITCHEN) was established in 2008 the capital city of building materials. The company has a production scale of more than **40,000 square meters**. It is a whole-house customization enterprise focus on the field of customizing furniture with an international perspective. It's products cover Various categories such as cabinets, wardrobes, and home furnishings, which forms a diversified and all-round home furnishing industry pattern. The company adopts the world's advanced German Homag production line, implements automated production fully, and the production capacity connect with international standards. PA KITCHEN was launched to develop abroad in such as USA, Canada, Australia, Japan, Chili, UAE, Indonesia....., as well as global strategic purchaser partners. In 2014, it further upgraded the globalization strategy to focused on building domestic and foreign strategies, with offering customized services globally.



INDONESIA FACTORY

PA KITCHEN is a professional manufacturer of kitchen cabinet, wardrobe and bath vanity. The headquarter factory locates in Foshan, China and the branch manufacture facility has been set up in Jakarta, Indonesia.

PA KITCHEN branch factory (exclusive for US market) is set up and started in the 3rd quarter of 2019 in Jakarta. The same model of production machines as the China factory is put into use. We also bring our skilled and experienced management team to the Indonesia factory to make sure the whole system runs as effective and smooth. Since the system is a copy of the HQ, the numbers of laborers and workers involved in production is impressively small due to high automation.

The advantages of PA KITCHEN Indonesia factory (exclusive for US market):

1. Feasible solution: we can ship from Indonesia to the US market and get rid of AD/CVD;
2. Cost-saving: it is duty-free for importing from Indonesia;
3. Massive production of RTA frameless cabinets meeting the US market standard.

15⁺

Experience (year)

40000_{m²}

Factory plant

15000_{m²}

PA Indonesia branch factory

150000⁺

Automatic Industry
Bulk "all in-house" production



DEVELOPMENT PROCESS



The land purchase will start in 2022, the foundation stone laying ceremony will start in 2023, and it is expected to start production before May 2024.



2008

Founded in 2008, Baishan was a Chinese leader in modern industrial kitchen manufacturing. Since then, and homes worldwide, we have been consistently devoted to improving kitchens.

2010

We start using the new trademark-PA, PA starts to expand internationally, setting up exporting department with a professional sales team.

2013

The new 20,000-square-meter factory, which houses carcass, lacquer plants, showroom, and offices, goes on line. PA becomes one of the largest cabinetry manufacturer in Guangdong.

2014

PA expands its product line and starts implementing Full House Solution.

2016

With its flourishing success in overseas markets, PA sets up offices in Australia, and Malaysia.

2017

An additional 2,000 square meter showroom is completed. This showroom houses all our new products, including kitchens, wardrobes, home furniture, bathrooms and more. The number of showrooms around the world has now grown to surpass 400.

2018

Expanded to 40000-square meter factory, 100,000+ sets of kitchens, 20,000+ home furniture, 155,000+ bathrooms, are produced annually.

2019

A branch manufacture facility has been set up in Jakarta, Indonesia, to expand US cabinet's market.



2020

Comparing with the sales in 2019, It increased 20% in the pandemic year 2020.

2021

PA Marketing Headquarters relocated to Bld 7, Meiju IBME Center, Foshan, China.

2022

PRODUCTION BASE

Production base

Covering an area of 40,000 + square meters, it is one of the top ten professional cabinet factories in Guangdong.

The dignified office building and natural green vegetation are like being in a modern garden with a beautiful environment, full of the fragrance of trees and flowers, which makes the sky bluer, the ground greener, and the products better!



PRODUCTION CAPACITY

Automatic production line

The German Homag flexible production line, the product manufacturing process is automated, informatized and refined to ensure high-quality products

INDUSTRY TIMES 4.0



10

4.0 Automated production line

150000+

Annual output



02

TEAM STRENGTH

Advantages



TEAM STRENGTH

250+ PA The team, take meticulous works in the production, research and development, sales, design, installation for one-stop services, we always set high standards for ourselves, to achieve surpassing and breakthrough, in each project sales performance ranks the top of the company; With our positive and optimistic attitude, we respond to the challenges of the market and win customers and markets with our excellent business skills and consistent intimate services.

PA KITCHEN CORE MANAGEMENT



Peter Yang
President

Peter Yang, the founder & president of Guangdong Baishan Furniture Co. Ltd, has 17 years of experience in the building materials and home furnishing industry. In 2003, he entered the cabinet industry as a regional manager of a well-known domestic cabinet company. In 2004, he started his own business and joined a cabinet brand. After years of experience accumulation, in 2008, he officially established Guangdong Baishan Home Furniture Co., Ltd. And its home furnishing brand PA KITCHEN in the capital of building materials.

With a keen and cutting-edge thinking vision, he has insight into the pain points of the industry, dissected the needs of end customers, the operating barriers of terminal stores, and formulated efficient solutions. After founding Baishan Furniture, he started with comprehensive upgrades in terms of products, production, management, service, etc., And is committed to making PA KITCHEN a leading home furnishing brand in China. In addition, he pays particular attention to overseas markets, and has established deep cooperation aboard, and has become a standout in the field of custom furniture.



May Zhu
General Manager

Co owner of PA Kitchen Director and director of PA Kitchen Overseas Business Dep. President of Building Material Supplier Alliance Founding member of International Trading Heroes Club.

She spent 16 years to immerse in the building material international trading business and developed a unique way of successful management and sales skills.

She is well-known as a motivated Entrepreneur with a proven track record of extraordinary achievements in building a sales team from the simple idea to an annual sales of multimillionaire-dollar.



Zhiqiang Li
Domestic Dep. General Manager

In 2006, entered a well-known domestic cabinet enterprise marketing manager;

In 2010, joined PA kitchen. He has gained a deeper understanding of the overall market operation, channel construction, franchise store operation and other fields, brand market operation, channel development, brand strategic planning and implementation strategy, the success of the product listing sales, to create efficiently and stable sales team.



Jianhua Liu
Production Manager

In 2003, enterprise installation team leader;
In 2005, enterprise production management;
In 2008, he joined PA kitchen and was in charge of the manufacturing department.
He has unique insights on production management, product research and development, core technology and process.
He has won the honor of "Outstanding Manager of China Home Building Materials Industry".

INTERNATIONAL BUSINESS MANAGEMENT TEAM



Vicky Yang (Sales Director)

16 Years of building material international trade and sales experience. Top gun of sales team with twenty million dollars annual sales.
2005-2010, She worked in the position of sales manager of an international mosaic and tile company;
2010-today, she grew into a veteran specialized in VIP customer service and massive scale project marketing service and management.



Doris Xie (Manager of Designer Dep)

Senior designer director of PA Kitchen with 16 years of experience in all aspects of customized furniture design.
Her knowledge covers all ranges of the field including furniture design, interior design, project design, showroom design, etc.
She masters all kinds of designer software from 2D to 3D rendering.
Among her works, there are 5-star hotels, huge showrooms, multiple apartment homes, and luxury villas.



Shella Yi (Sales Supervisor)

A rising sales manager in PA Kitchen, lucky star of the team. She is popular among her customers because of her passion and patience. Fun and joke is always around her.



Apple Mao (Sales Supervisor)

Engaged in foreign trade business 15 years, rich experiences in international trade and sales. She has been working as the PA kitchen export project manager with 10 years.
High-rated service person of all time due to her sincere work attitude, responsibility and good sense of what client needs. Good at key customer service, management of big scale project.

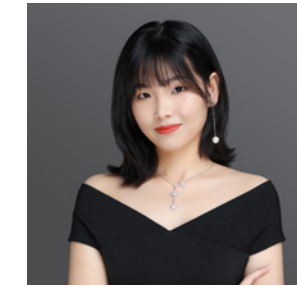


Leo Ou (Sales Supervisor)

PA Kitchen Export Project Manager, also veteran in building material international trade for 14 years. 2009-2019, He worked as the overseas project manager in a mosaic and tile company in LA California;
2020-today, he specialize in VIP customer service, distribution solutions and support, and project consultancies.



Garmen Liu (Senior Project Manager)



Jennie Jiang (Senior Project Manager)



Lolita Cheung (Project Manager)



Caffey Tang (Project Manager)



Chris Ou (Project Manager)



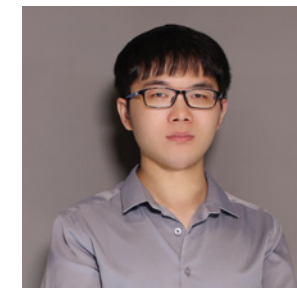
Bella Wang (Project Manager)



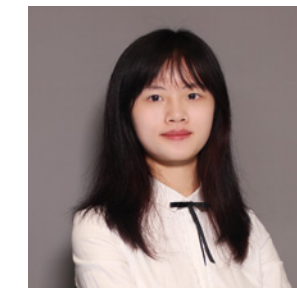
Kendrick Li (Project Manager)



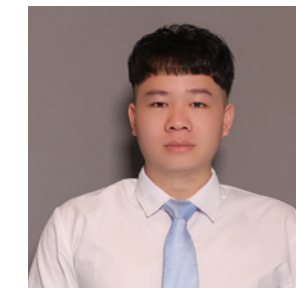
Alex Lai (Project Manager)



Terry Huang (Project Manager)



Wing (Project Manager)



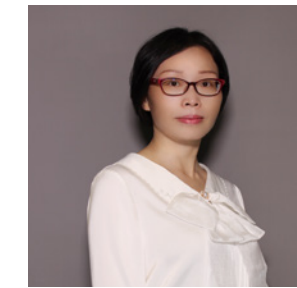
Sam (Project Manager)



Natalie (Project Manager)



Tasa (Project Manager)



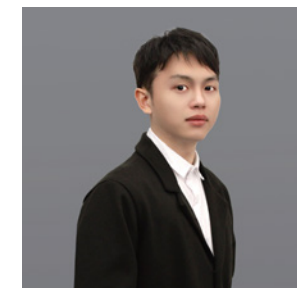
Sonya (Project Manager)



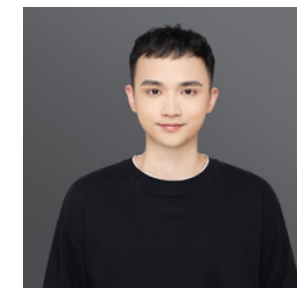
Candy (Project Manager)



Ivy (Project Manager)



Jake (Project Manager)



Allan (Project Manager)

TEAM STRENGTH EXPORT SALES TEAM

- ▶ We have professional knowledge about international market and export procedures with of the industry.
- ▶ Professional solutions for all kinds of customers including project builders, wholesalers, agents, designers, traders etc.
- ▶ Full supports for customers to gain projects and jobs, as well as quick problem solutions.
- ▶ Reduce the project site difficulties for customers.

60+
Different countries

1200+
Overseas customers

41000+
Overseas projects



TEAM STRENGTH EXPORT DESIGNER TEAM

15+ Years exporting cabinet design experiences, can catch the tastes and understand the requirements of customers from different background.

- ▶ Experienced and easy to communicate;
- ▶ Can point out no reasonable designs and give the appropriate improvement plan;
- ▶ Can reduce the assembling difficulties and minimize the risk on site by professional design experiences.



PA KITCHEN

WHAT CAN WE DO FOR YOU

1. Easy to get an idea for your own project

Precise cost estimation based on client's drawing/requests;
Can provide similar project cases for reference;

2. Can understand your needs clearly and provide appropriate solutions according to project information

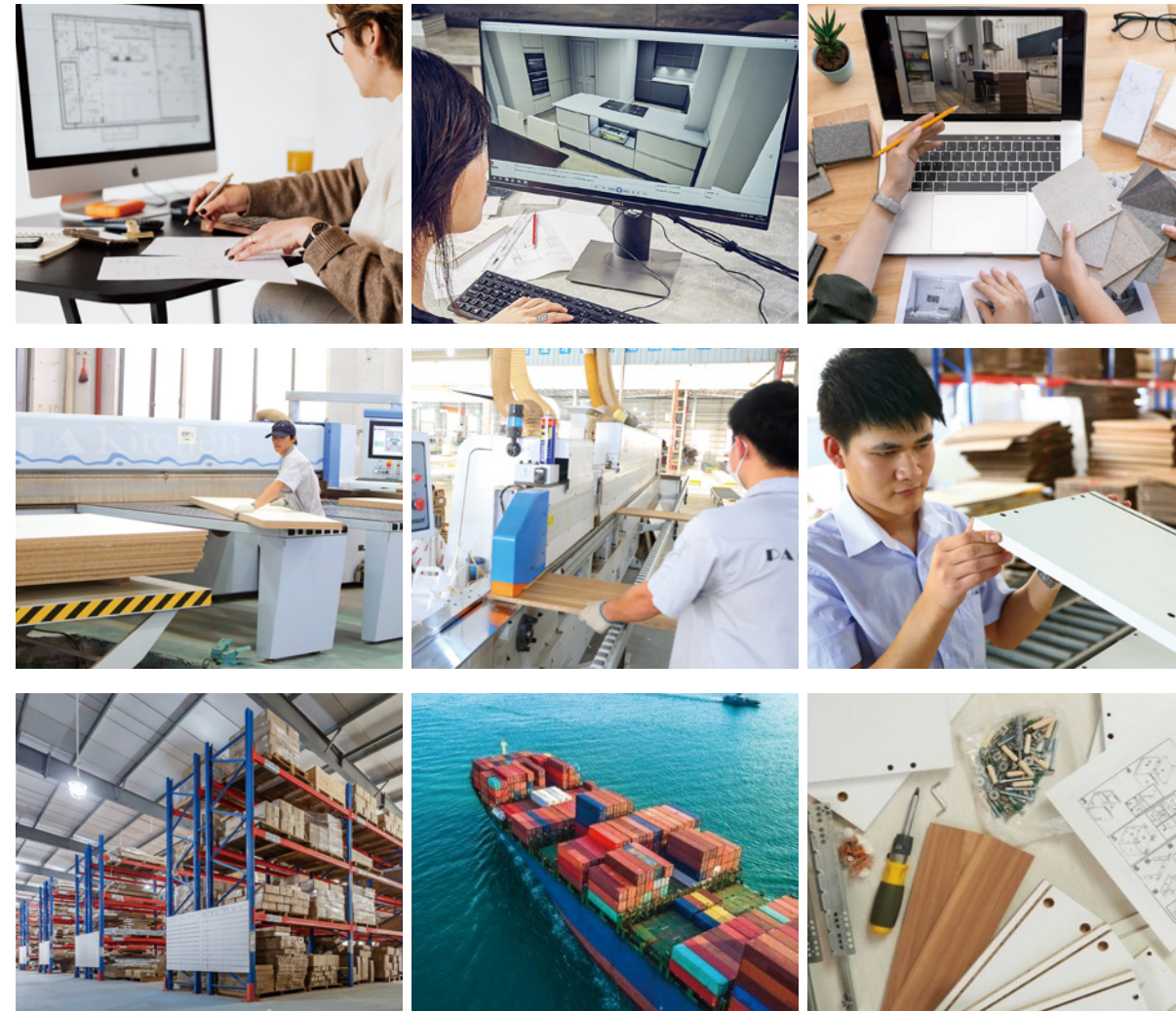
Fully understand design requests of different districts;

3. Can understand your requests quickly and communicate easily

Provide detailed 2D drawing and 3D rendering with leading software;
Advice and consultant service on project proposal with cases experience;
Can adjust materials/designs/proposals based on project budget;

4. Can reduce your time cost

Advice on better design for the most reasonable solution;
Foresee possible issues and make smart adjustment to reduce mistakes at site;
Instant communication: quick and real-time response;
Project bidding documents/samples and tools to settle orders;



5. Can speed up the progress of order communication

Measurement at site if big project needed;
Inspection factory or production online or in person;

6. Making sure order is produced exactly as engineer drawings, cut down mistakes to save costs and time at site

Can offer mock-up and assembling;
Before massive production, will prepare a mock-up to confirm all the details.
Installation tests are run to make sure everything is correct;
Will have production schedule and delivery schedule for whole project based on your site schedule

7. Ensure the whole project can be done under control

PA team will provide a proper amount of spare items for project site replacement;
Can provide online QC inspection;

8. Ensure the whole project can be done under control

Can provide both flat packing and assembly packing;
Each delivery will provide clear packing list to clarify products, and prepare necessary shipping documents and Installation guide which including assembling drawings, assembling instructions and video;

9. Great help to the site assembling and cutting down the B/L

Can provide on-site assembling guide or assembling instructions and video.

COOPERATION PROCEDURE PROJECT SUPPORT BY PA



Professional Team Support

Our sales, design and production team could provide you with professional service from pre-sale, in-sale & after-sale.

Design & Measurement

We will provide 2D & 3D drawing of whole big project. If needed, we could send designer to measure.

Sample Support

Before the big order, we will prepare a mock-up of kitchen cabinet and wardrobe to confirm all the details.



Production Support

We will have production schedule and delivery schedule for project before ordering.

Delivery Support

We will deliver in partial, each delivery we will provide clear packing list to clarify products, and provide required custom clearance files.

Package & Assemble Support

We will provide flat packing or assembled packing. If needed, we could send assemble team to the site.

COOPERATION PROCEDURE ORDER PROCEDURE



03

PRODUCTS SYSTEM

Advantages



SYSTEM

QUALITY CONTROLLING SYSTEM



The biggest challenge for furniture customization is quality control. Since each job is customized, whenever mistakes like wrong holes, missing pieces, unclear labels, misleading drawings happen, the progress of installation at site will be messed and delayed, and eventually damage the schedule of inspection and completion. In order to get rid of the problems at site, PA has been persisting on removing the mistakes from the beginning, which is making sure the quality during production. To get the full solution to control the quality of every procedure, PA spent millions to build up the full system for connecting design and production data. This system, with the name Intelligent Design and Production System (IDPI system in short) manages all the data in the workflow and controls the outcome of manufacture. This is an efficient network covering every step and every position during production and making the workflow smooth.

Besides that, PA quality controlling system is detailed below 4 parts:

- 01** Homag production devices from German are brought in to make sure the precision of manufacturing.
- 02** IDPI system is a intelligent and automatic system that reduces the error rate by having less manual labor involved.
- 03** ERP system manages all steps from sales order confirmation to order fulfillment. The order status is visible and traceable during the whole process on ERP.
- 04** High standard and strict inspection protocols for supply chain products make sure the final quality of finished products by PA.



PART ONE AUTOMATIC PRODUCTION LINE

The German Homag flexible production line adopts the three-pronged approach of automation, information and refinement for the product manufacturing process, which ensures the product is best in every link from design, cutting, surface finishing, assembly, transportation, installation to service, It not only saves labor costs, but also improves production efficiency, greatly reduces errors, and better shortens the delivery time.

4.0 Smart Production Base

PA KITCHEN is fully practicing Automatic Industry 4.0, and bringing German quality and intelligent products to more families.



PART TWO

INTELLIGENT DESIGN AND PRODUCTION SYSTEM

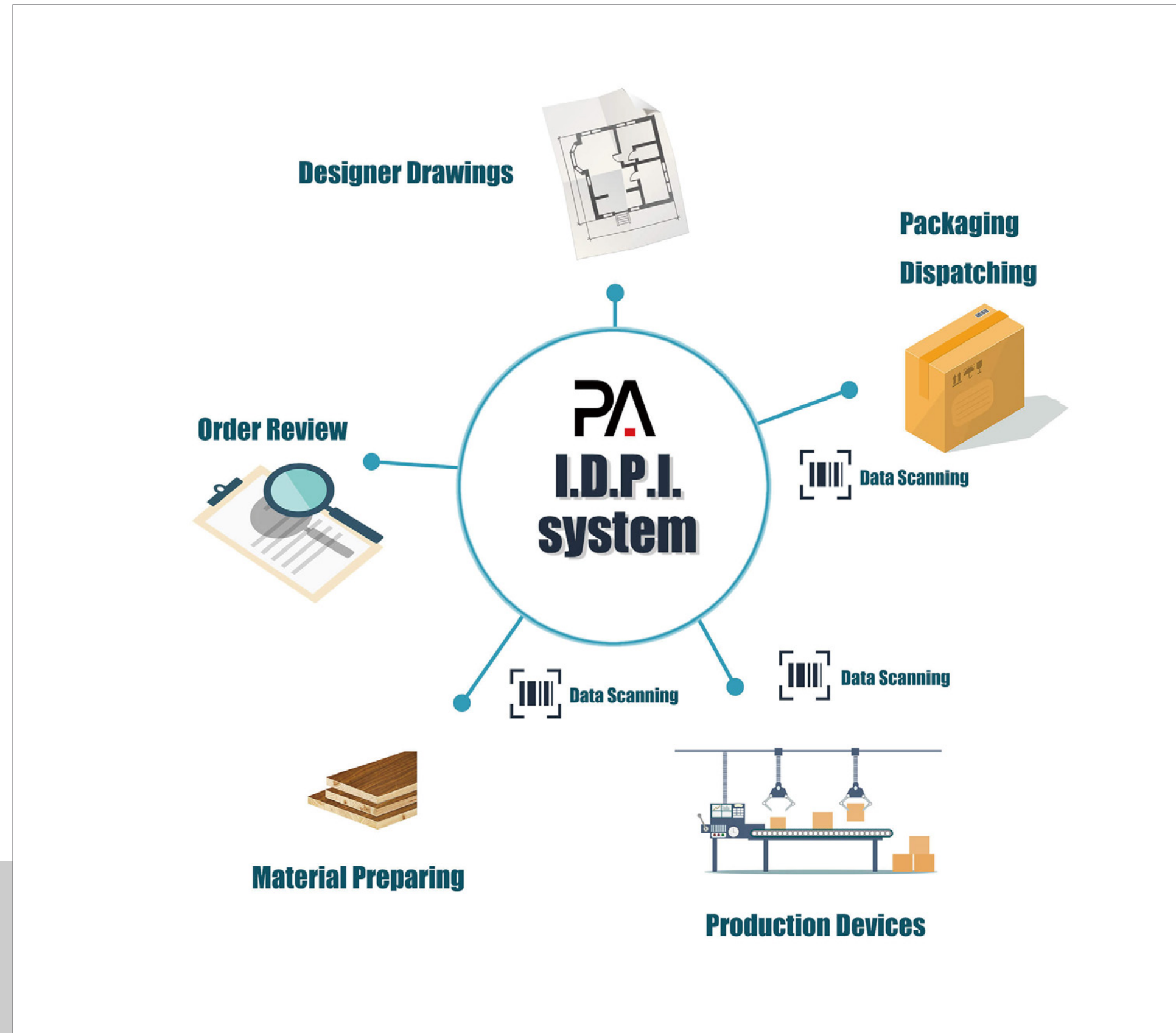
We spend more than millions to develop the Intelligent Design and Production System (IDPI system in short), which integrates design, production and quality control, is a major guarantee for PA to maintain its comprehensive competitiveness. The data on design and production can be shared and used in one system:

- 01** Designer uploads the design drawing data package to the system;
- 02** The system will translate the drawing data automatically to production data and send it to each step of production. In this way, no more human work is involved into the data analysis step and reduce the mistakes made by humans.
- 03** Every panel gets its own QR code on, workers only need to scan the QR code, the machines will produce according to the data automatically. No need the workers to consider the directions.
- 04** During the sorting area and packing step, workers only need to scan the QR code, the system will prompt and ensure the sorting is correct, make sure every panel of whole project is included.

This system can largely reduce the labor participation and human errors. (The record we had shows that the error rate is less than 0.1% now instead of 5% before because of this beautiful system)

What does any of this mean to you

PA Kitchens is a leading Kitchen Cabinets Manufacturer because we use technology to keep our prices low, our product quality high, and our manufacturing times short. We stake our reputation on providing everything you could ask for at competitive prices.





After cutting, there is a label printed out for each panel which marks the data on it, workers only need to scan the QR code on following steps for production, it plays an important role.



01

INTELLIGENT DESIGN AND PRODUCTION SYSTEM

Smart Cutting

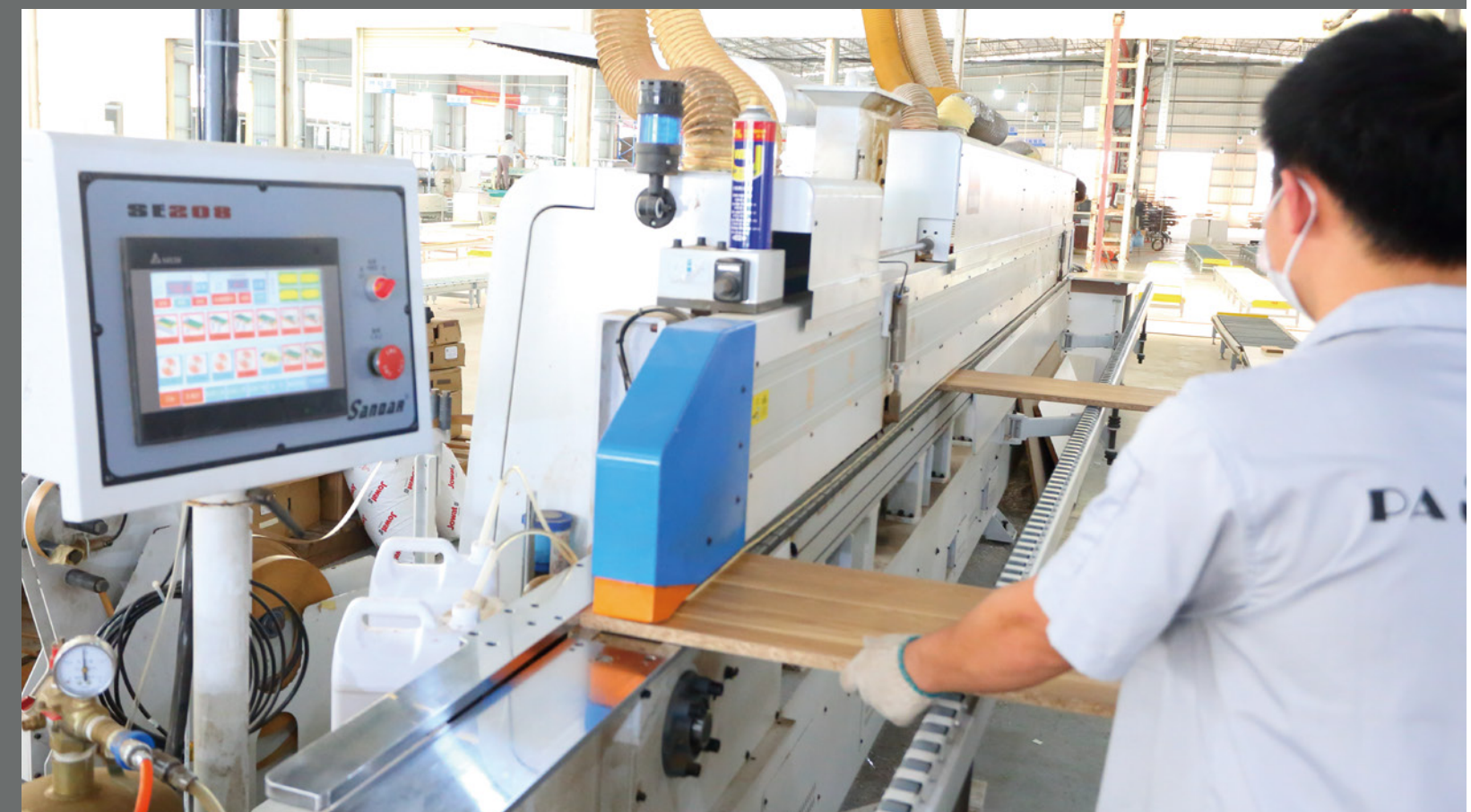
Cutting panels is the first step in production. The production data are transferred to each machine computer by the IDPI system, the workers only need to choose the task on the screen and follow the instructions on it. No need to think about how to cut. So it could ensure the accuracy of the cutting.



02

INTELLIGENT DESIGN AND PRODUCTION SYSTEM

Edge banding



03

INTELLIGENT DESIGN AND PRODUCTION SYSTEM Intelligent Drilling

The accuracy of holes is crucial for assembly. Any tiny mistake will cause big trouble to the installation at site on time and money. In PA, the only job our workers need to do for drilling is scanned the QR code on each panel, then the computer will show the hole location which is translated from the IDPI system, and then follow the instruction to put the panel in the right direction into the machine, the hole will be drilled automatically. If there are any mistakes happen from the cutting process, the system will recognize as well. Like when you put the panel inside, if the size doesn't match the system data, it could also clarify and alert the worker to check.



04

INTELLIGENT DESIGN AND PRODUCTION SYSTEM Smart Sorting & Inspecting

PA intelligent sorting system receives and identifies signal data and locates materials in different channels. The computer analyzes the data and checks the accuracy, the screen will show both the number of pieces present and absent.

It can prevent the orders proceeding with pieces missing, keeping the whole order in the correct entire number is extremely for the installation workers at site. Sorting is the first step for QC.



05 | INTELLIGENT DESIGN AND PRODUCTION SYSTEM

Quality Inspection Procedure



After Smart Sorting, PA will have secure quality inspection. During this process, our skilled masters will cross check with the drawing again. Attention is paid to the details like the panel measurement, edge banding, panel color, drills position etc., which will be significant to avoid mistakes and helpful for our clients to receive correct items before packing. Vacuuming and cleaning will be done during this process in order to keep it dust-free when you unwrap PA products.

PA quality inspection on product details to reduce errors for customers.



Quality Inspection Procedure

06

INTELLIGENT DESIGN AND PRODUCTION SYSTEM

Packing



Over the past decades, PA Kitchen has been dedicated to providing safe and secure package for oversea delivery. With the help of IDPI system, PA is able to scan each panel's QR code before packing to make sure all the panels are collected and not missing out.

Besides, the system can detect the correct panel that belongs to the matching order, thus ensuring our clients are getting what they ordered after long time of waiting on delivery.

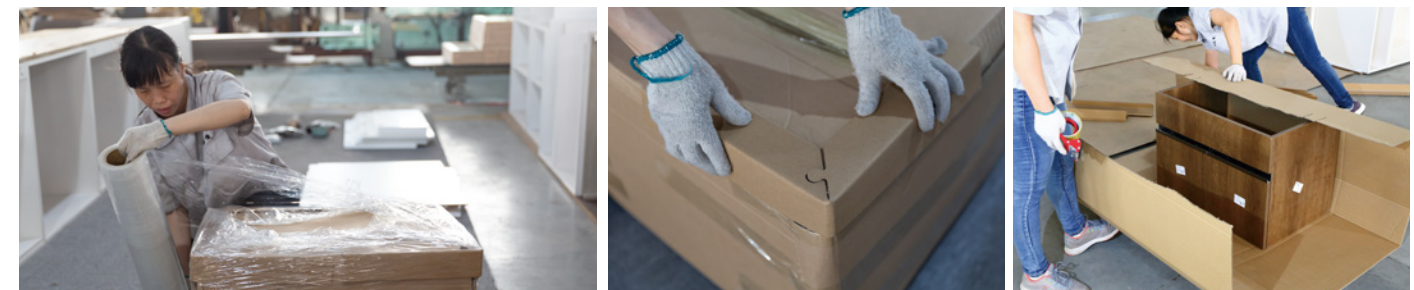
Every piece of panel will be scanned to make sure correct quantity.

Scanning the QR code will generate all the information of each panel in the computer system to ensure all the panels belong to the right order. This will be of great significance to avoid mistakes like missing pieces, messing up other orders' panels etc.



Flat packing

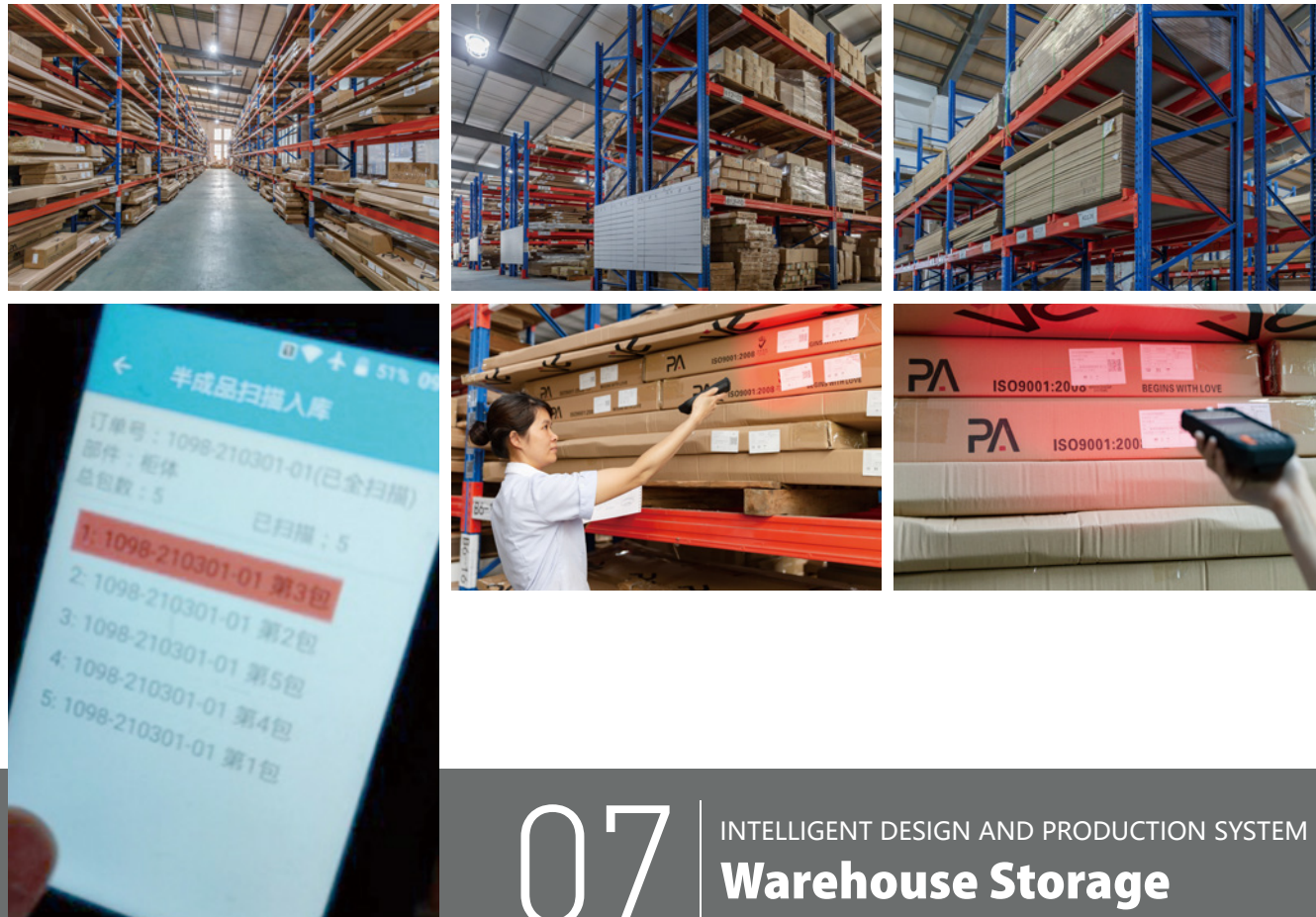
PA Kitchen offers secure flat packing to protect products from breaking during delivery. Each package will have 4 strong paper corners to keep the edge safe. Meantime we will use foam to fill in the gap so that panels will not crush themselves during handling and movements on shipping. After scanning the QR code of each panel to make sure no panel is missing, we will proceed to packing and seal firmly. In this way, it will reduce the damage rate as much as possible.



Assembling packing

PA Kitchen offers secure per-assemble packing service to customers in need. We will assemble the cabinet and wrap it up with thick paper firmly along with the shape of the cabinet. There will be 8 strong paper corner protection to avoid it from damage. Once the general packing is finished, we will wrap several layers of water-proof PVC film on the outside. This will be beneficial and avoid the cabinet from getting wet easily.



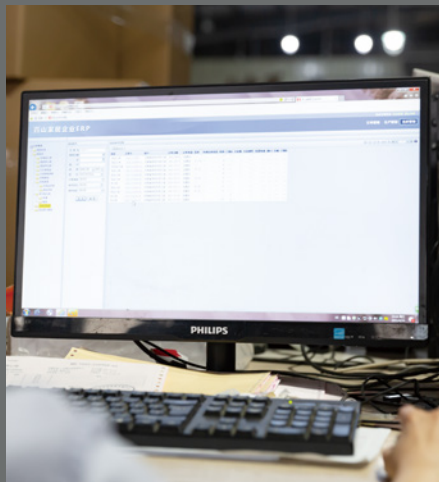


07 INTELLIGENT DESIGN AND PRODUCTION SYSTEM Warehouse Storage

Effective inventory highlights high-quality warehousing and powerful equipment configuration of PA KITCHEN. PA Kitchen has a complete and well-run warehouse system to keep everything in order. We will see in the following pages of how we apply IDPI system to help with the warehouse management.

Once production is finished, we will move all packages to warehouse. At this stage, PA warehouse keeper will scan the QR code on every single package to confirm if the total quantity is correct. This will help our clients to avoid after sale trouble like missing packages and save their time and money to fix the problem. After keeper confirms the quantity, we will place it on the warehouse shelves. There are QR code to represent the location of each order, which can help us track client order's location clearly without making mistakes. This can guarantee that client is getting the correct items.

In warehouse, PA will prepare for weight and volume estimates in order to make delivery plan. Documentary will stick labels on each package so that client can easily identify where it belongs. Meanwhile warehouse keep will calculate and check total packages quantity and label again to make sure everything is correct before removing internal use the Chinese label and only keep the English label. three days before loading the container, keep will scan and unload all the packages in loading area so that we can start loading immediately to enhance efficiency.



08 INTELLIGENT DESIGN AND PRODUCTION SYSTEM Hardware sorting system

Workers here scan the QR code, the system will tell the types and quantity of each piece of hardware and light up before the screen, and they pick up the hardware accordingly and place it on the table for a final scan and photograph for checking. The ERP will record all the original package data to make sure everything is correct and traceable. We could track it easily. No miss or pick the wrong one because all the data are from the IDPI system, no man interrupt.



04

PROJECT COOPERATION Advantages



COMPETITIVE ADVANTAGES WHY CHOOSE PA

01 Capacity advantage

40000 m²
Factory plant

150000 units
Bilk "all in-house" production
capacity per year

4.0
Automatic Industry



The factory scale is 40,000 square meters, the annual output of 150,000 sets of cabinets. With automatic production, intelligent products and customized demand, PA is practicing automatic Industry 4.0, improving production efficiency, greatly shortening delivery cycle and reducing costs, bringing German quality to China and bringing intelligent manufacturing products to more families.

40,000 m² workshop, capacity 15,000 sets/month, can accommodate all kinds of large and small projects

02 Quality control advantage



German Homag computerized saw



Numerical control saw



Automatic edge sealing machine

1. Industry 4.0 automatic production line: Advanced machines are guaranteed for accuracy and high quality.
2. Automatic production software with ERP system follows optimized process orders by scan the QR code on each unit, which largely reduces human errors and production time, very helpful to quality control on customized products.
3. Raw materials, glue, hardware and packing materials are all top quality.

03 Product advantage



Can custom-made whole-house furnitures in PA, do the mainstream products in the market, help you to do one-stop purchase and save time and energy.
One-stop furniture supply: Complete system and production process, one-stop procurement, almost every kind of panel furniture in the market we can do.

04 Professional exporting service team



Professional solutions for all kinds of customers including project builders, wholesalers, agents, designers, traders etc. Easier to communicate and get the jobs done, ensuring the project proceeds smoothly.
Communicating with PA team smoothly: with the our rich exporting experience, our sales team and designer can understand your requests quickly and communicate easily in English ,and could provide you with professional service from pre-sale, in-sale & after-sale.

05 Exporting experiences advantage



Rich projects experience with more than 15 years of cabinetry exporting business: Over 41,000 projects experience which can fully understand different countries requests for quality and designs.
By 2023, our products were embraced by 60+ different countries (1200+ clients) all around the world, such as USA, Canada, Australia, Japan, Chili, UAE, Indonesia, etc. By 2019, more than 450 franchises all around the world.

COOPERATION PROCEDURE PROJECTS REFERENCES

01 Our clients



Projects in Middle East

Supply Cabinets
Location Dubai, Middle East
Year 2022

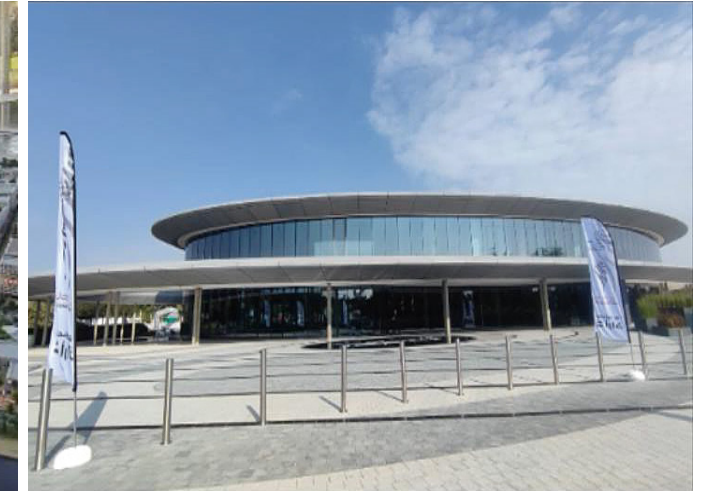


02 Our showrooms





575 Units of upscale apartment homes.



Projects in Middle East

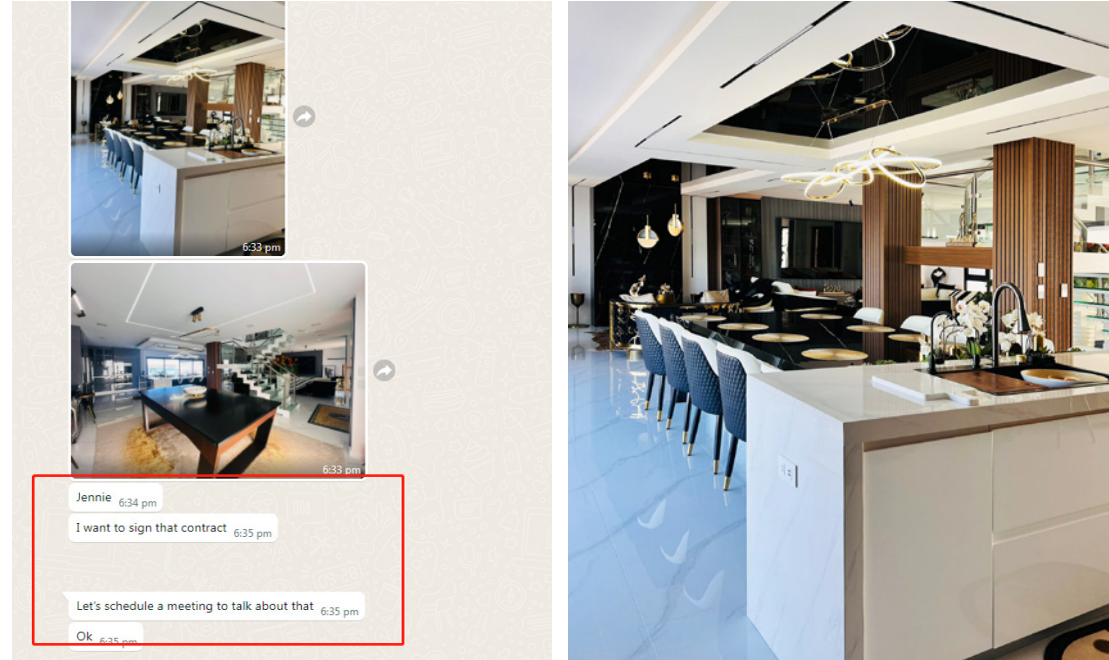
Supply Cabinets
Location Dubai, Middle East
Year 2022



Projects in Middle East

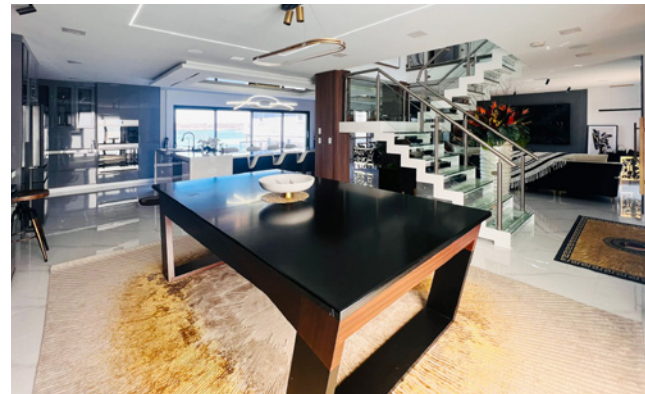
Supply Cabinets
Location Dubai, Middle East
Year 2022





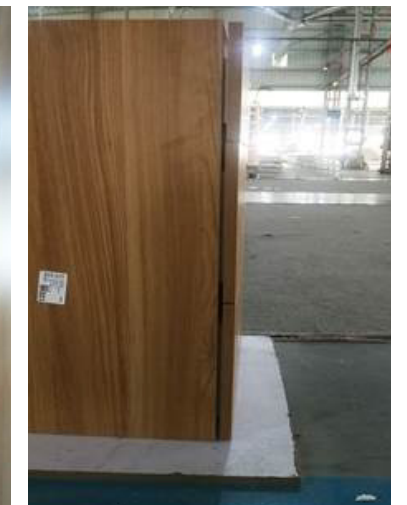
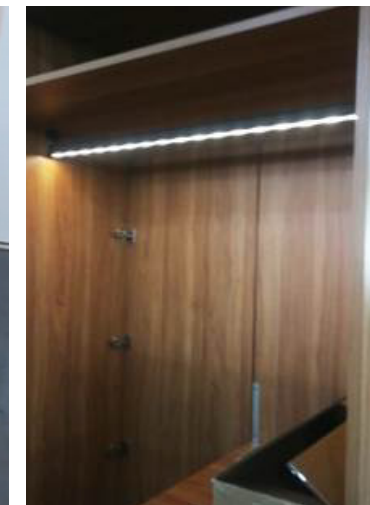
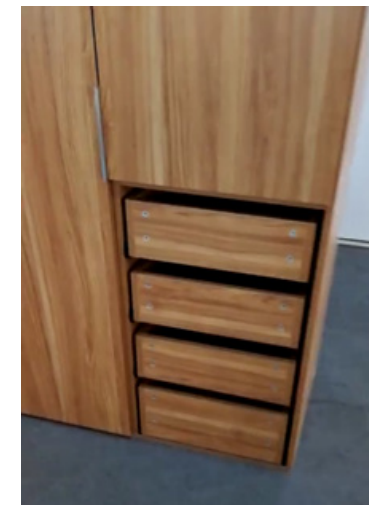
Projects in America

Supply Cabinets
Location America
Year 2022



Projects in America

Supply Cabinets
Location Argentina
Year 2020





Projects in America

Supply Cabinets
Location America
Year 2022



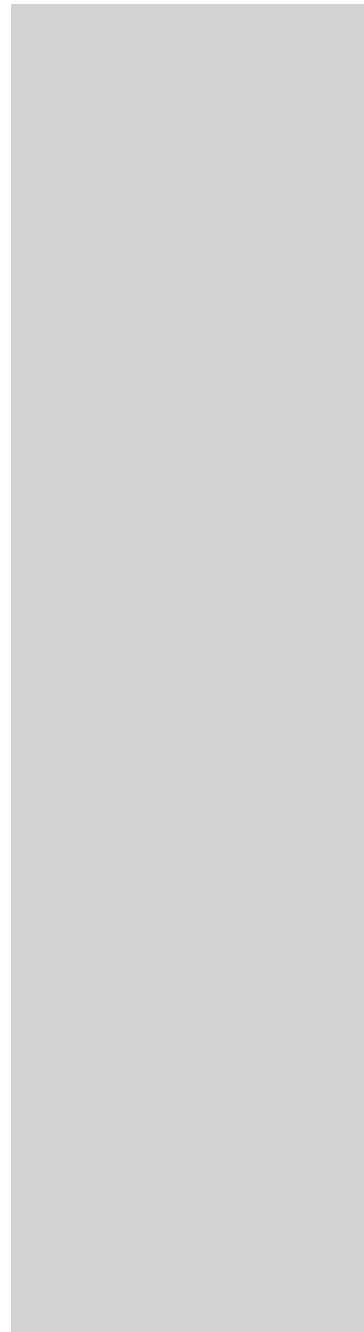
Projects in America

Supply Cabinets
Location Florida, USA
Year 2023



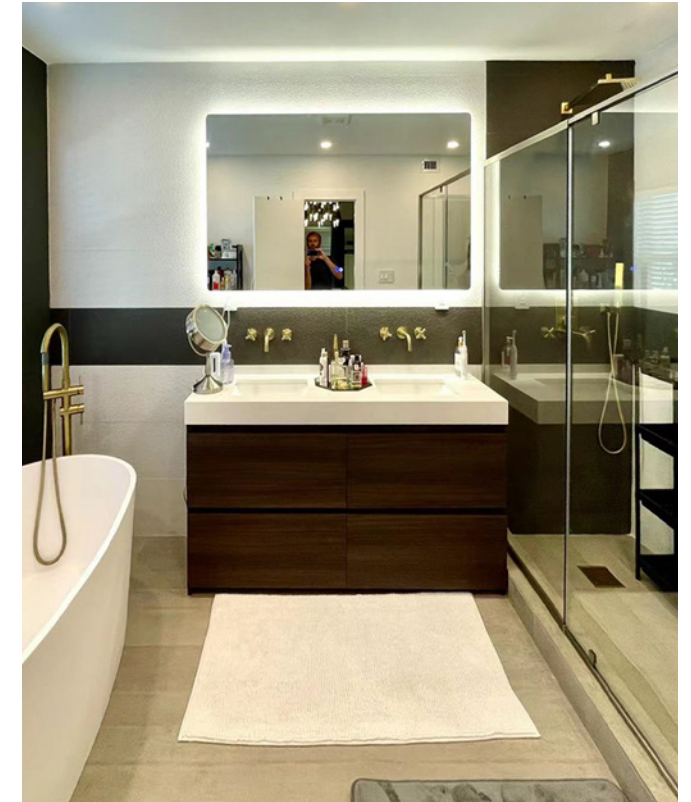
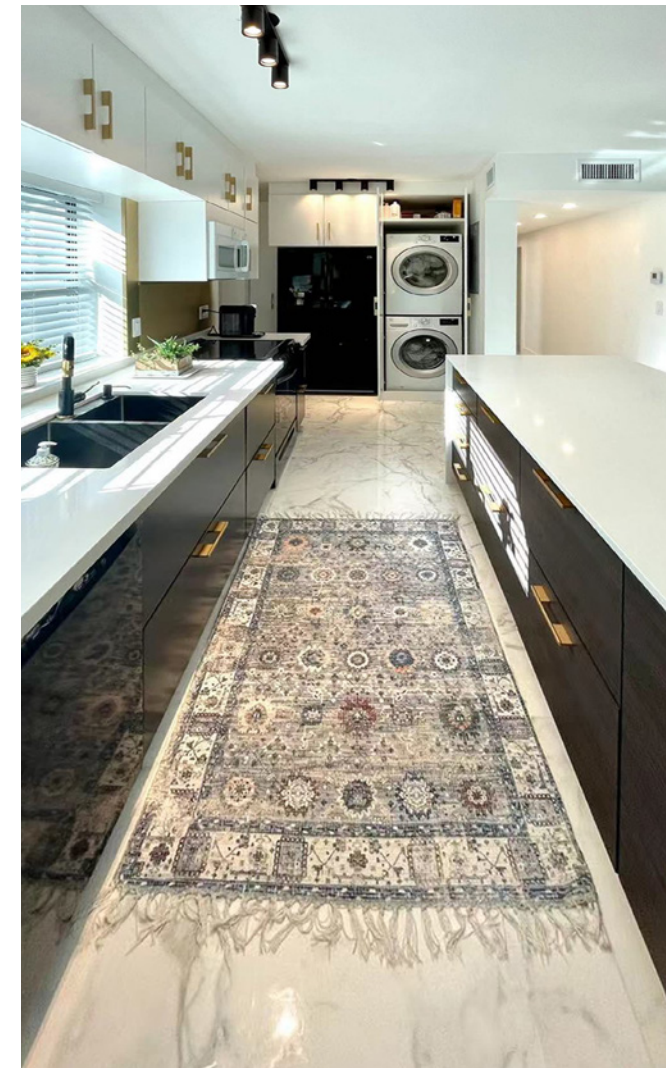
Projects in America

Supply Cabinets
Location New York, USA
Year 2020
Qty 160 Sets



Projects in America

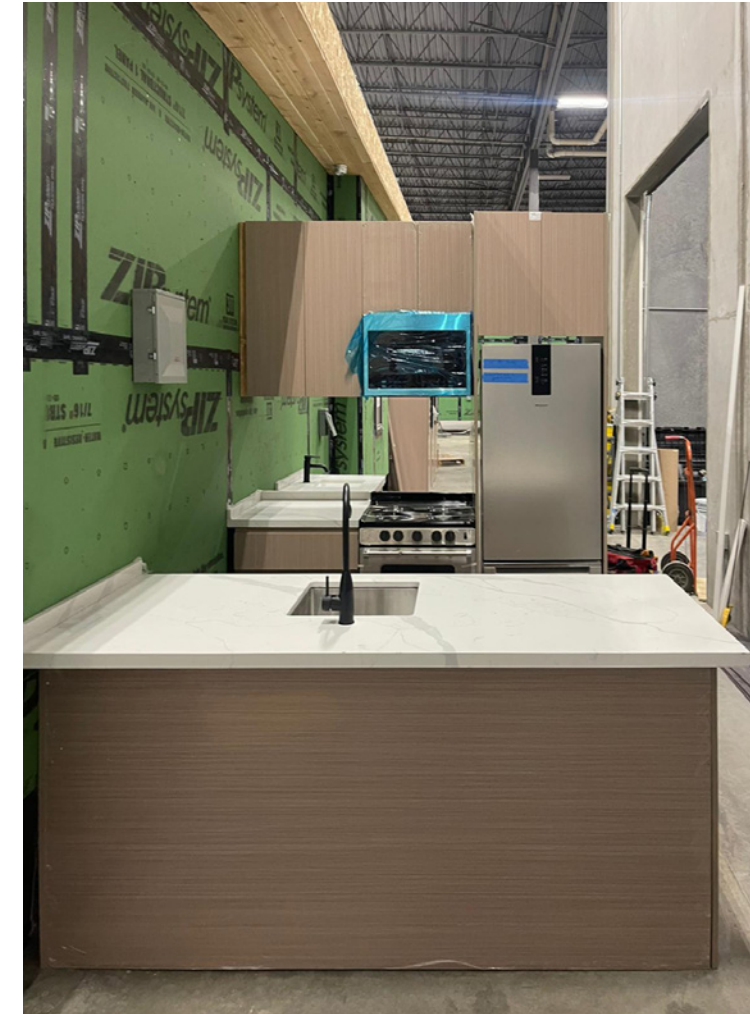
Supply Cabinets
Location America
Year 2021





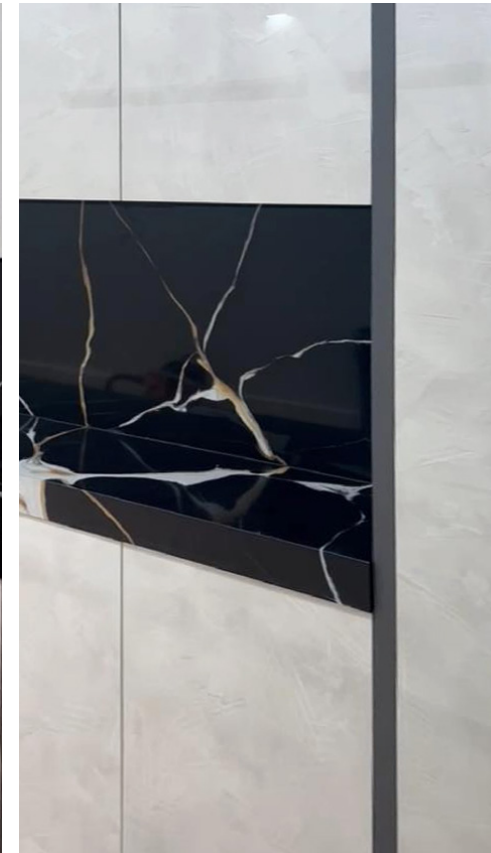
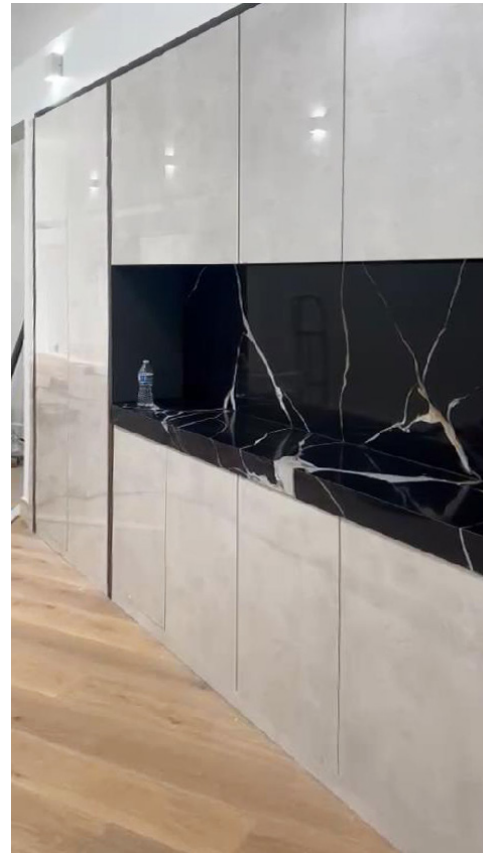
Projects in America

Supply Cabinets
Location America
Year 2023



Projects in America

Supply Cabinets
Location America
Year 2022

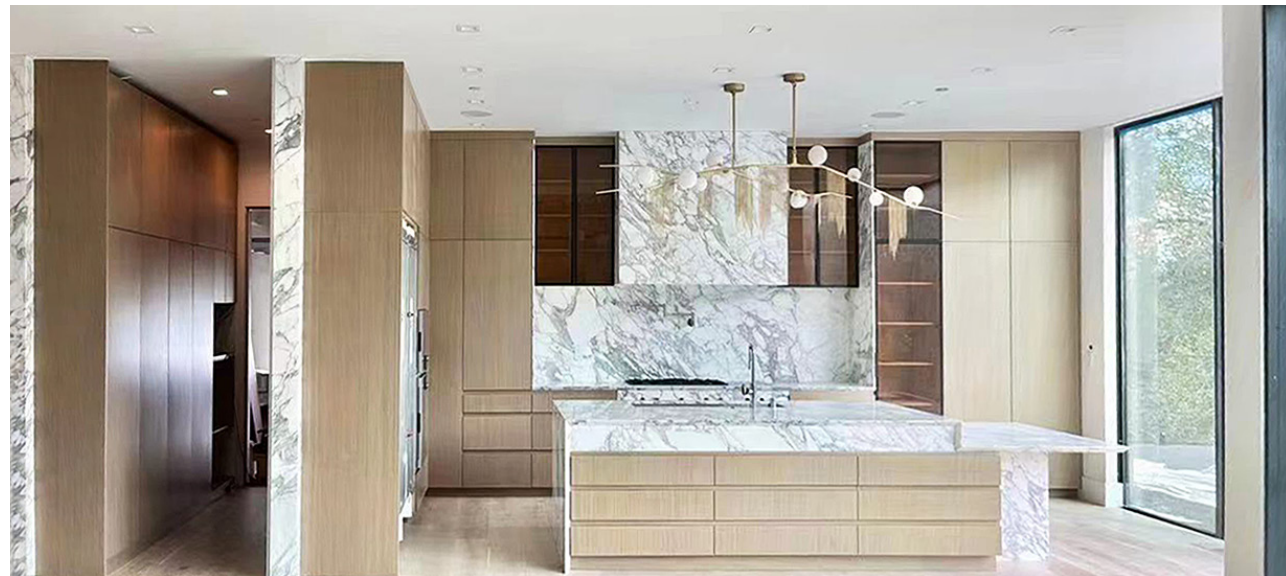


Projects in America

Supply Cabinets
Location America
Year 2022



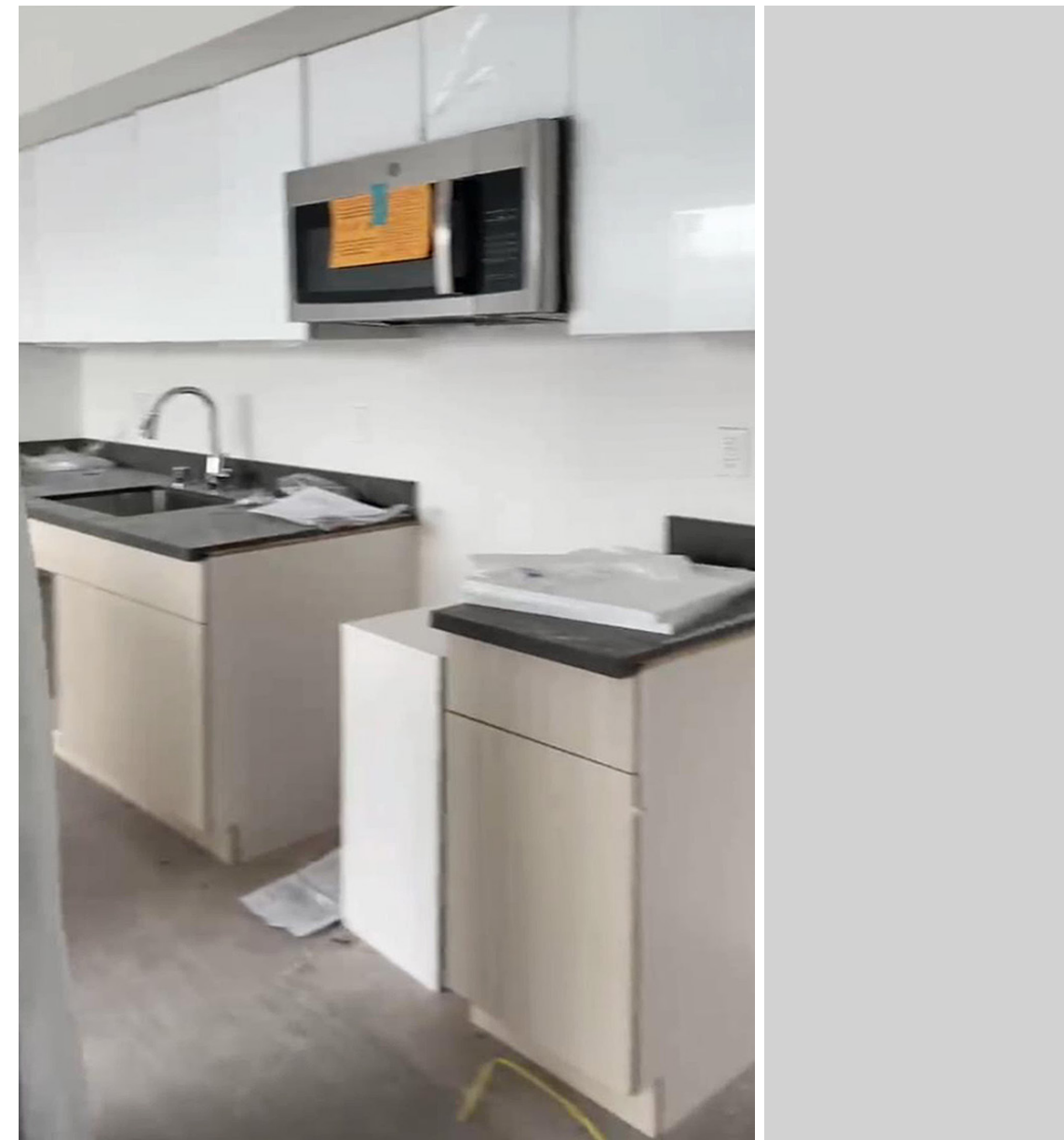
3D Rendering Design



Kitchen cabinet feedback

Projects in America

Supply Cabinets
Location Seattle, USA
Year 2022
Qty 250 Sets





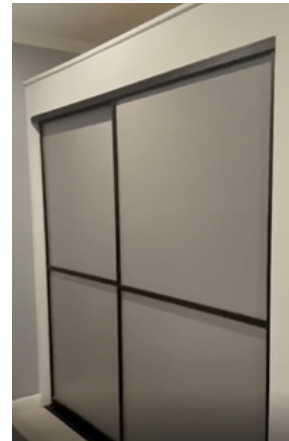
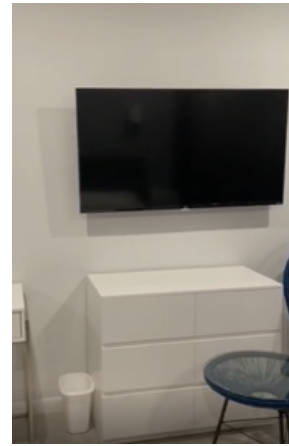
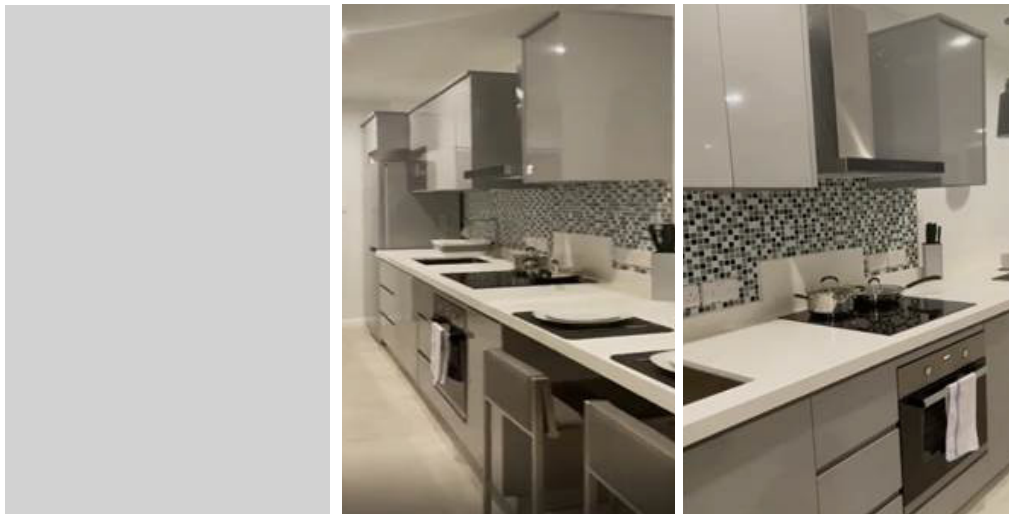
Projects in Panama

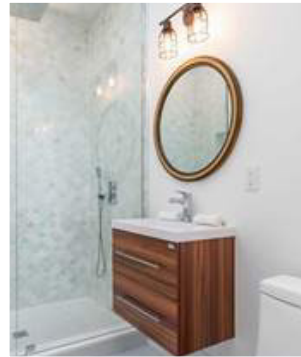
Supply Cabinets
Location Panama, Middle America
Year 2020
Qty 180 Sets



Projects in America

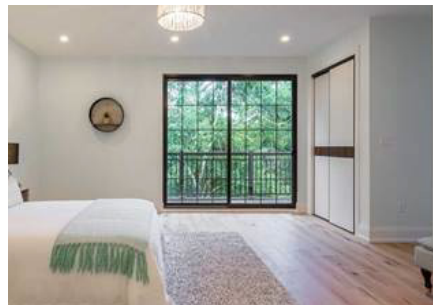
Supply Cabinets
Location Grenada, America
Year 2020





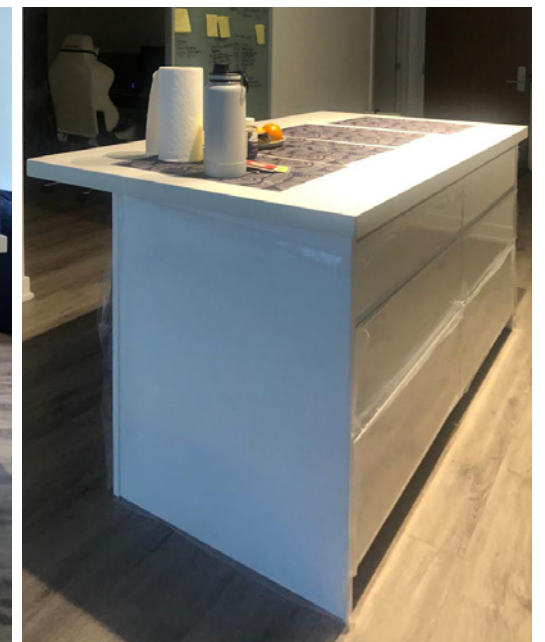
Projects in Canada

Supply Cabinets
Location Canada
Year 2021



Projects in Canada

Supply Cabinets
Location Toronto, Canada
Year 2022



Projects in Canada

Supply Cabinets
Location Caroni, USA
Year 2022



3D Rendering Design



Real Display

Projects in Canada

Supply Cabinets
Location Canada, North America
Year 2023



Projects in Chile

Supply Cabinets
Location Chile, South America
Year 2020



Projects in Chile

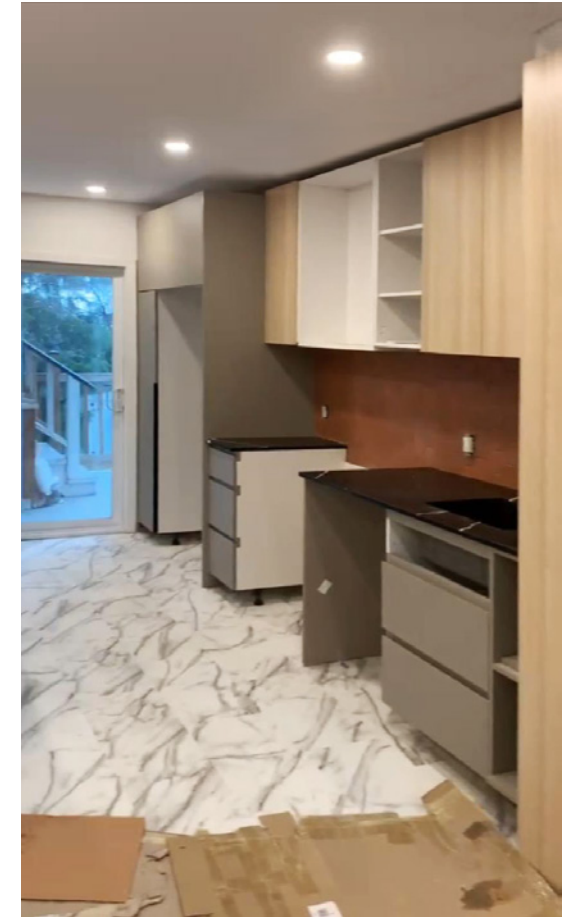
Supply Cabinets
Location Chile, South America
Year 2020





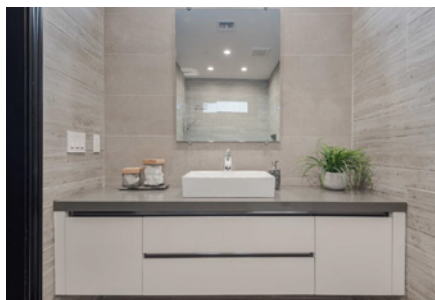
Projects in Los Angeles

Supply Cabinets
Location Los Angeles, North America
Year 2020



Projects in Canada

Supply Cabinets
Location Canada, North America
Year 2022





3D Rendering Design



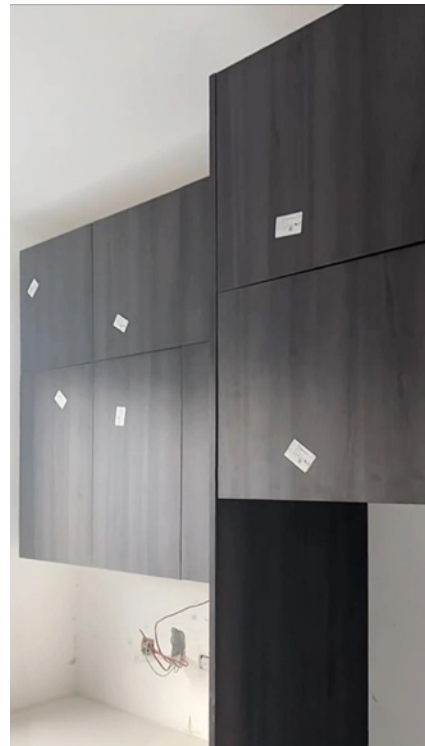
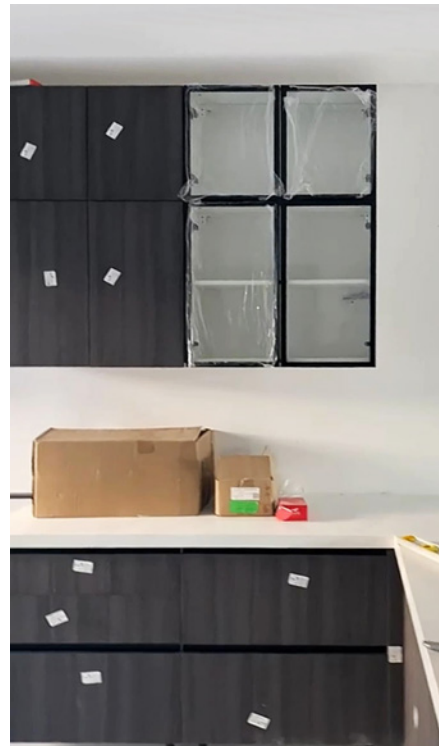
Projects in Africa

Supply Cabinets
Location Mauritius, Africa
Year 2022



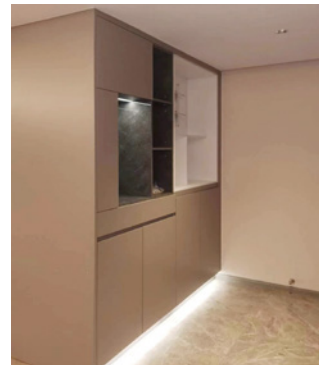
Projects in Jamaica

Supply Cabinets
Location Jamaica, North America
Year 2022



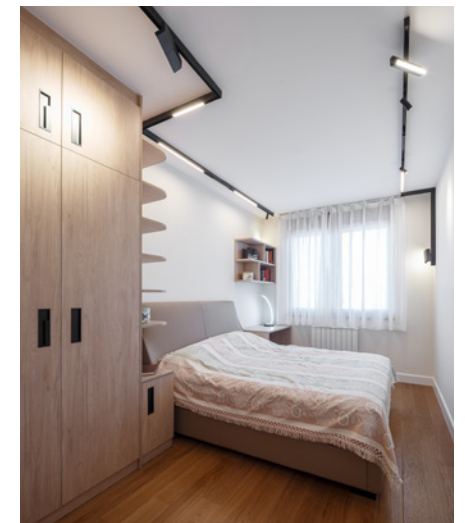
Projects in Asia

Supply Cabinets
Location China, Asia
Year 2023



Projects in Europe

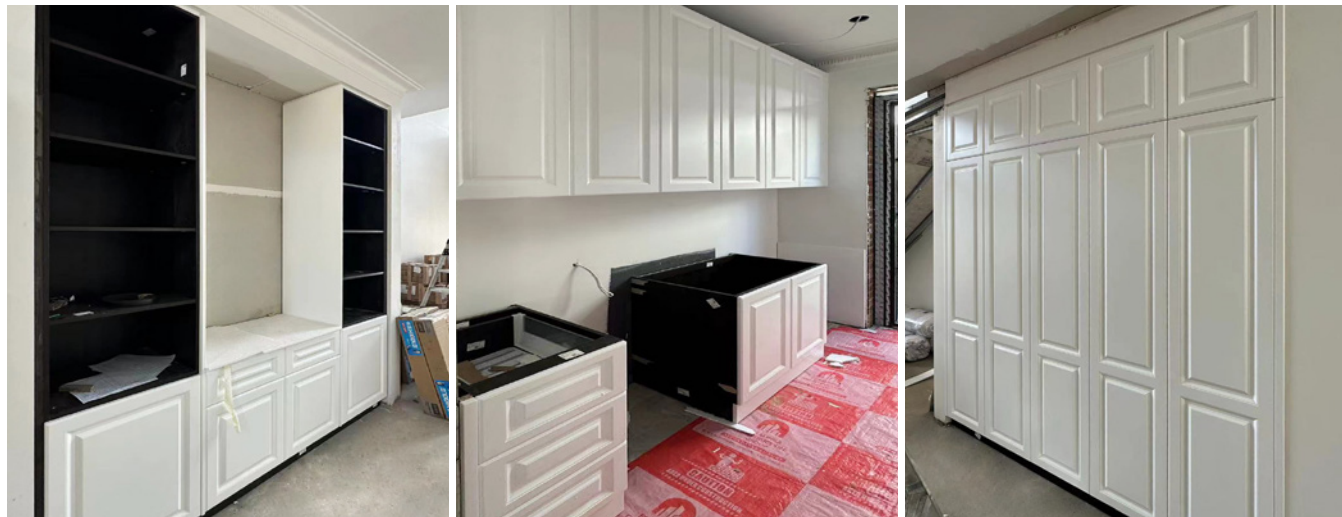
Supply Cabinets
Location Zemun stan, Europe
Year 2023





Projects in Australia

Supply Cabinets
Location Australia
Year 2023



Projects in Japan

Supply Cabinets
Location Japan
Year 2023





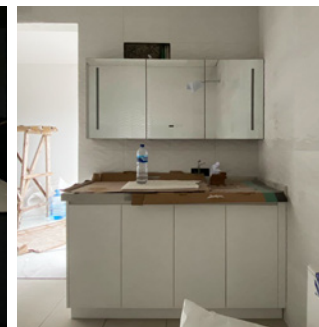
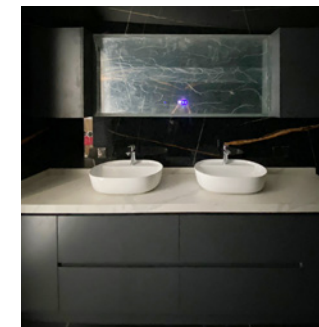
Projects in Japan

Supply Cabinets
Location Japan
Year 2023



Projects in Indonesia

Supply Cabinets
Location Bali, Indonesia
Year 2022





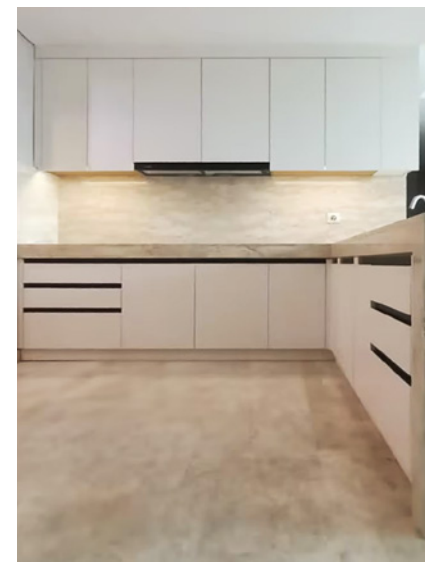
Projects in Indonesia

Supply Cabinets
Location Indonesia
Year 2023



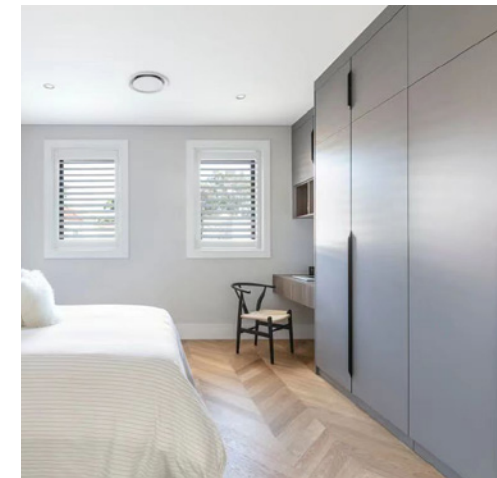
Projects in Australia

Supply Cabinets
Location Pella, Australia
Year 2022



Projects in Africa

Supply Cabinets
Location Uganda, Africa
Year 2022



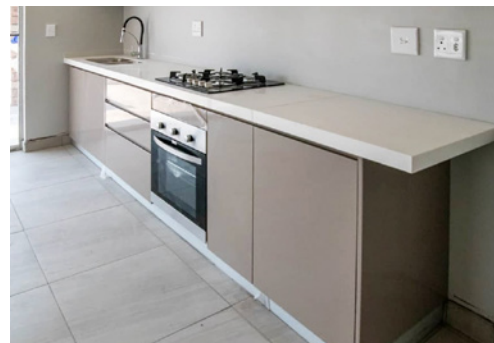
Projects in Australia

Supply Cabinets
Location Brisbane, Australia
Year 2022



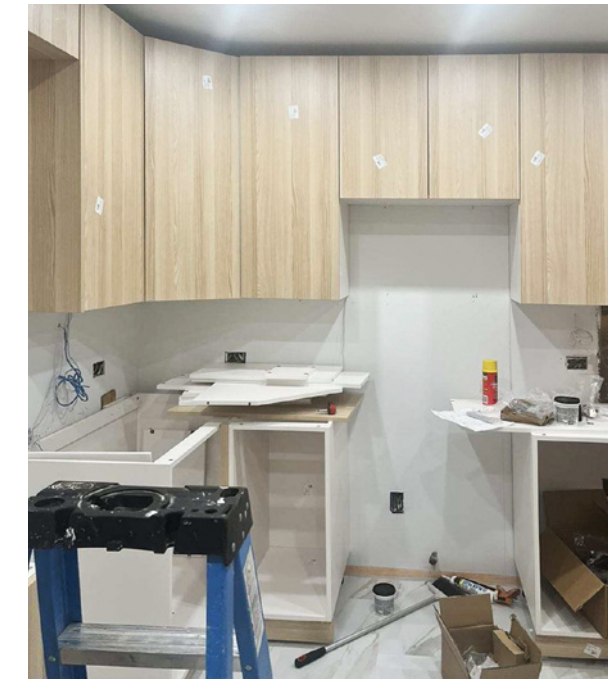
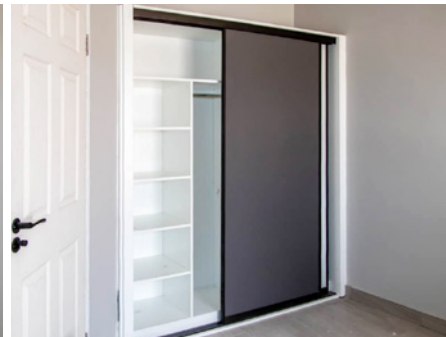
Projects in America

Supply Cabinets
Location New York, USA
Year 2023



Projects in Africa

Supply Cabinets
Location Namibia, Africa
Year 2022





3D Rendering Design

Projects in Oceania

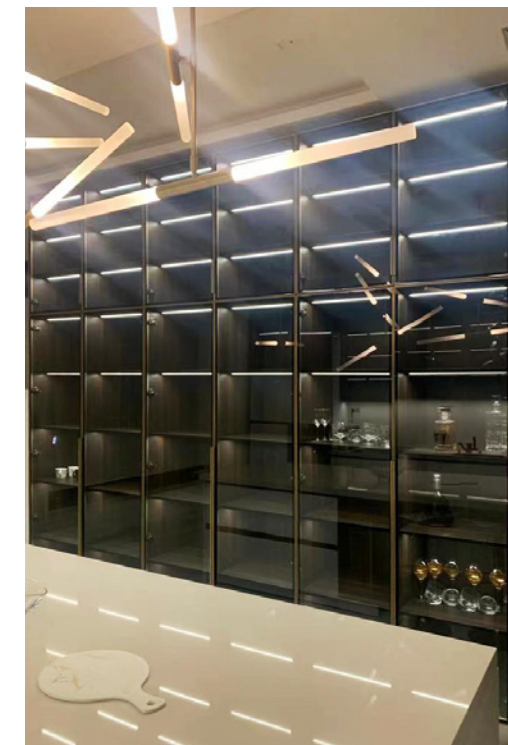
Supply Cabinets
Location New Zealand, Oceania
Year 2023

Projects in Africa

Supply Cabinets
Location Nigeria, Africa
Year 2023



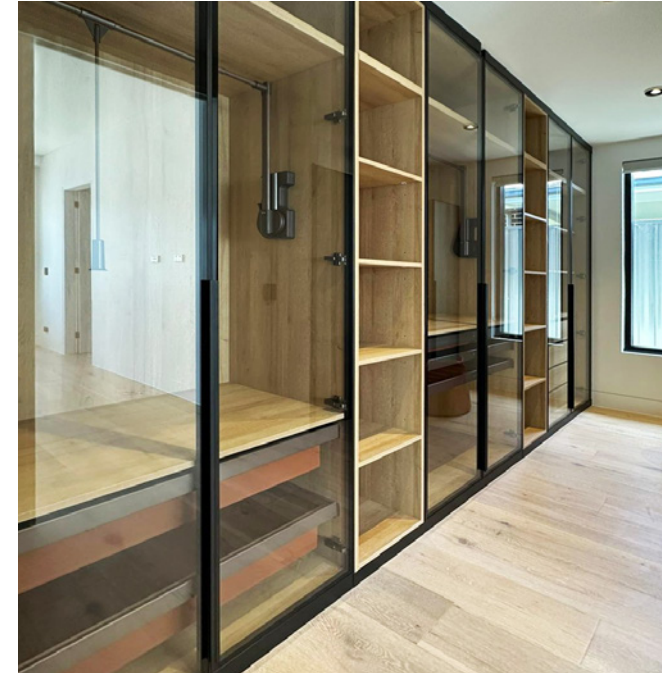
Real Display





Projects in Australia

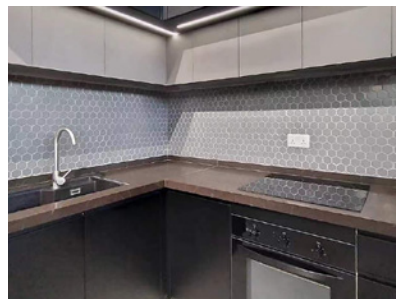
Supply Cabinets
Location Sydney, Australia
Year 2022





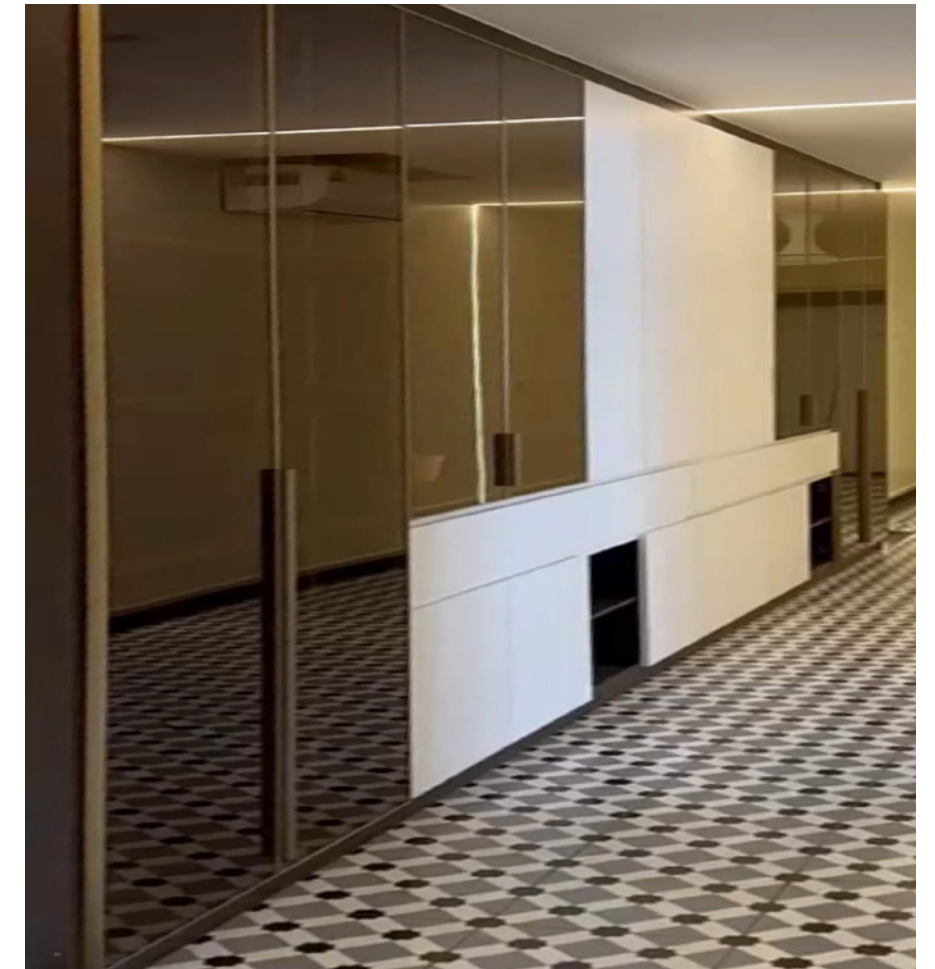
Projects in Africa

Supply Cabinets
Location Ghana, Africa
Year 2022



Projects in Oceania

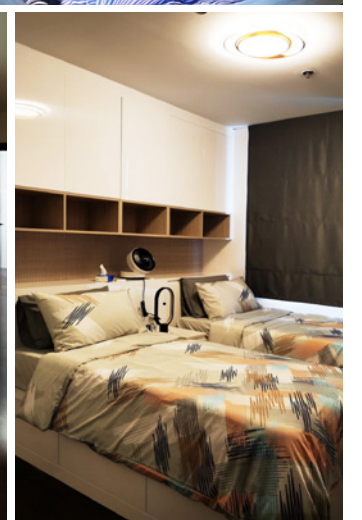
Supply Cabinets
Location Singapore, Oceania
Year 2022





Projects in Africa

Supply Cabinets
Location Ethiopia, Africa
Year 2022

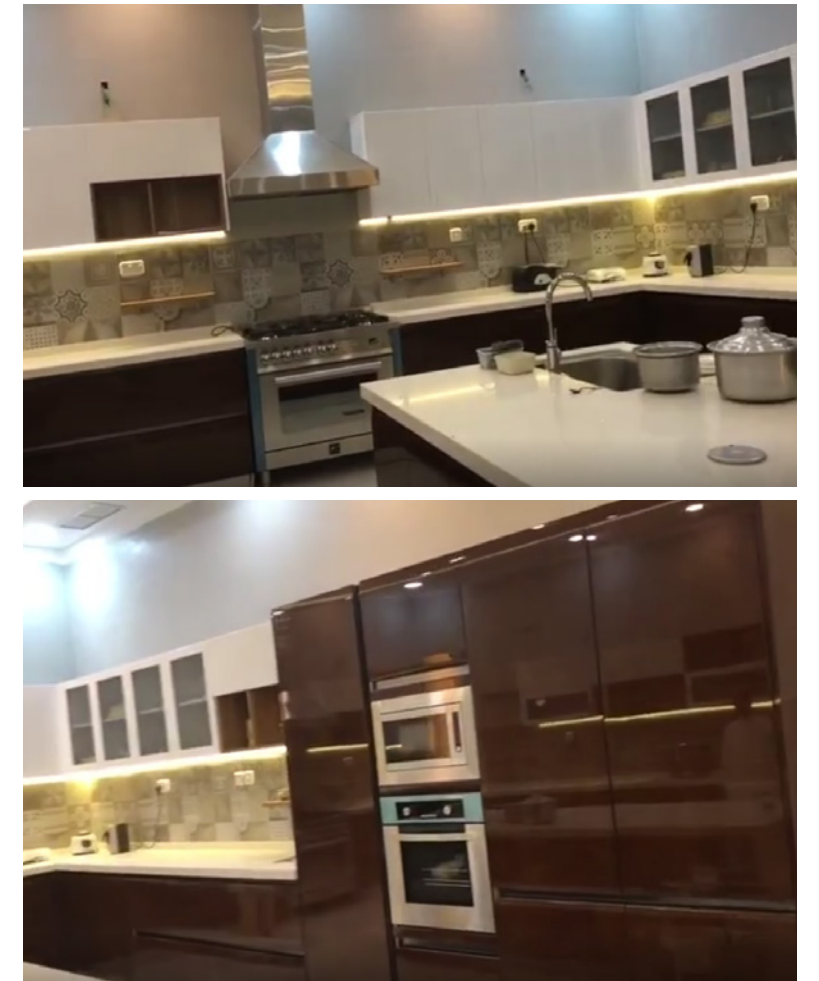


Projects in Southeast Asia

Supply Cabinets
Location China, Asia
Year 2023

Projects in Southeast Asia

Supply Cabinets
Location Philippines
Year 2021



Projects in Middle East

Supply Cabinets
Location East Timor, Indonesia
Year 2021



Projects in Middle East

Supply Cabinets
Location Dubai
Year 2021



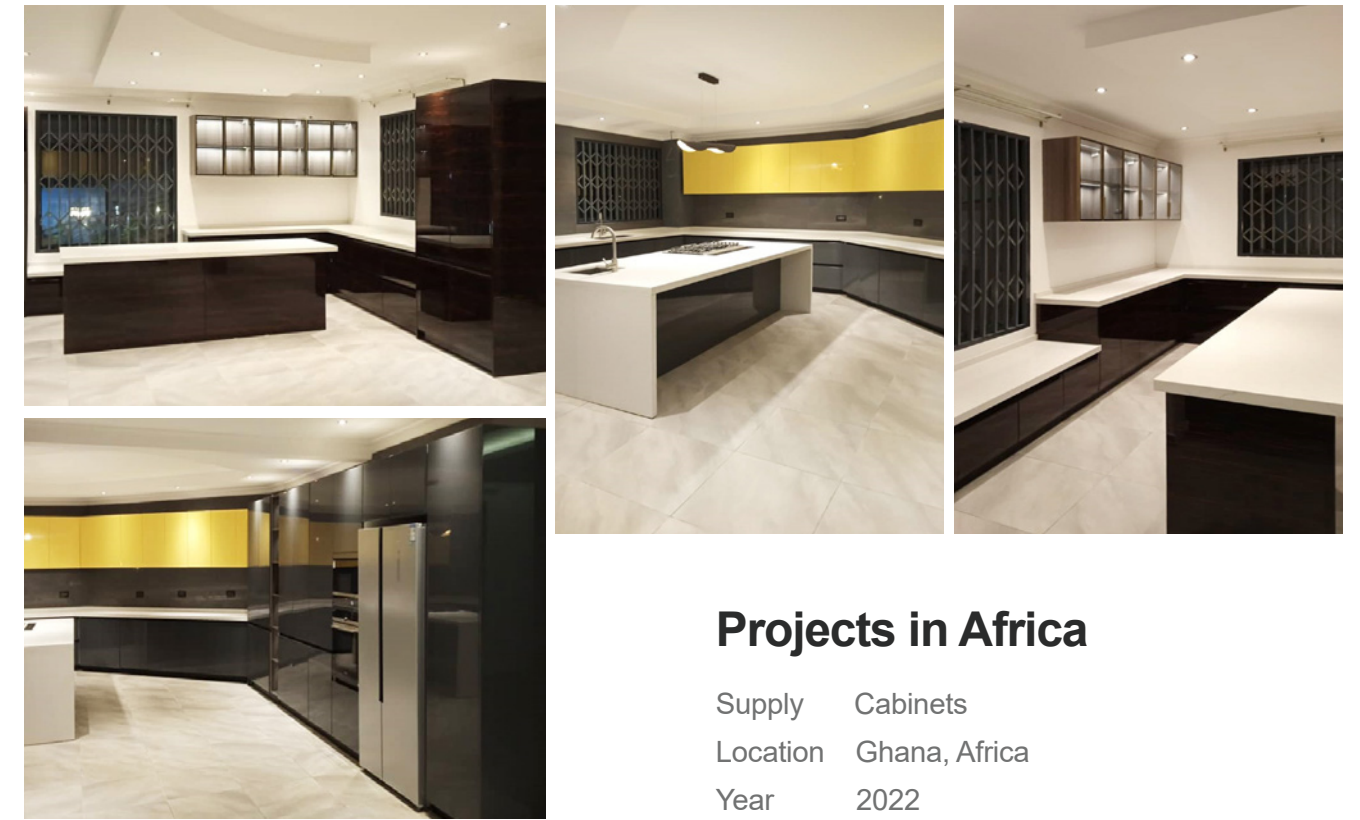
Projects in Southeast Asia

Supply Cabinets
Location Qatar, Middle East
Year 2021



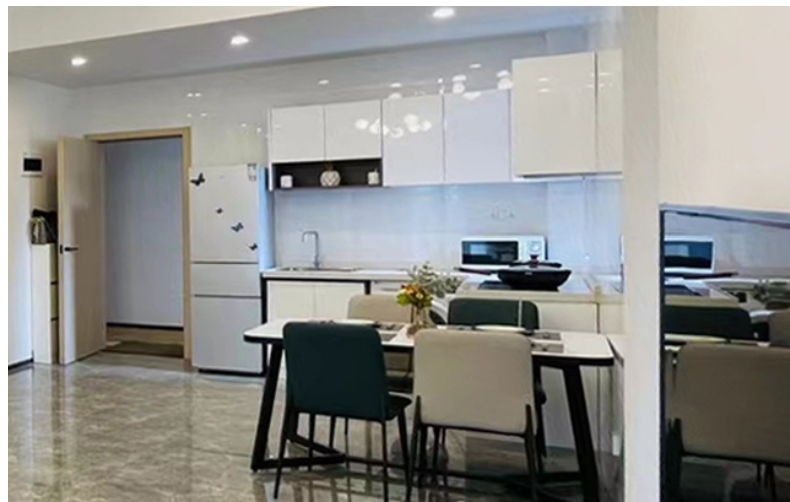
Projects in Africa

Supply Cabinets
Location Rwanda, Africa
Year 2022



Projects in Africa

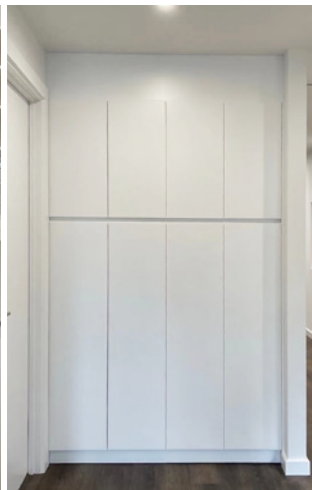
Supply Cabinets
Location Ghana, Africa
Year 2022





Projects in Australia

Supply Cabinets
Location Australia
Year 2021



Projects in Africa

Supply Cabinets
Location Rwanda, Africa
Year 2021





Projects in New Zealand

Supply Cabinets
Location New Zealand
Year 2021



Projects in Australia

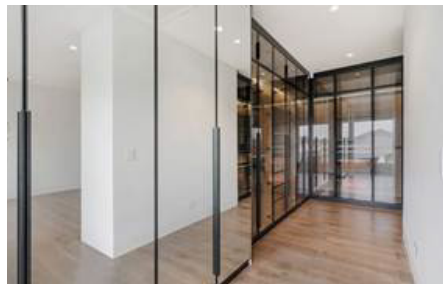
Supply Cabinets
Location Australia
Year 2021





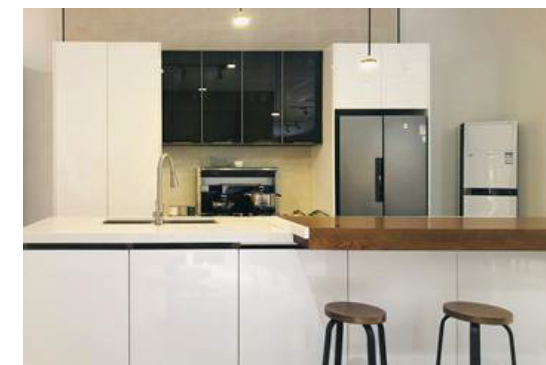
Projects in Australia

Supply Cabinets
Location Australia
Year 2021



Projects in Africa

Supply Cabinets
Location Kigali, Rwanda
Year 2021





Projects in Asia

Supply Cabinets
Location Malaysia, Asia
Year 2022

Projects in Asia

Supply Cabinets
Location Malaysia, Asia
Year 2022





Projects in Australia

Supply Cabinets
Location Australia
Year 2020



Projects in Australia

Supply Cabinets
Location Australia
Year 2020



Projects in Middle East

Supply Cabinets
Location Dubai Arabia
Year 2021



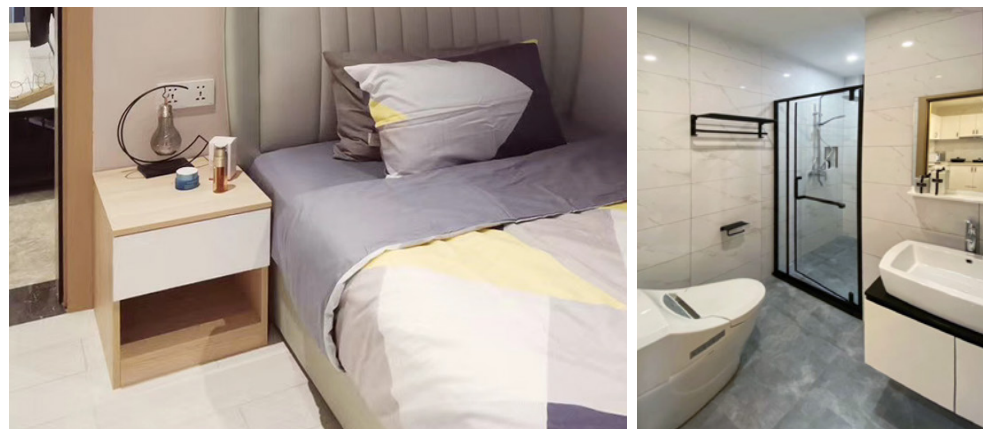
Projects in Africa

Supply Cabinets
Location Nigeria, Africa
Year 2020



Projects in Africa

Supply Cabinets
Location Kigali, Rwanda
Year 2020



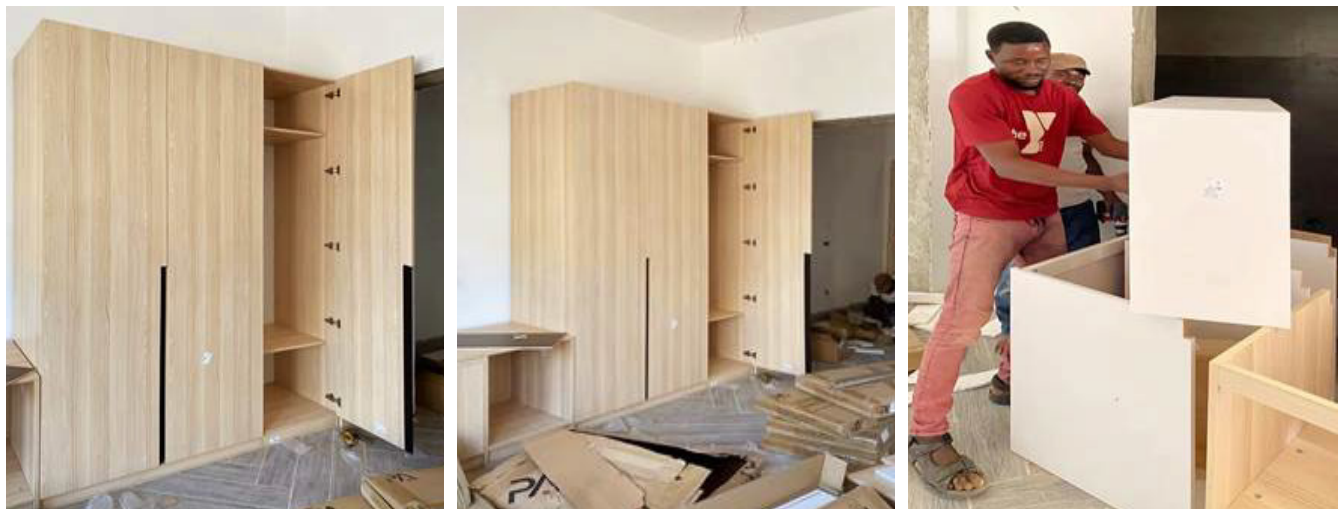
Projects in South East Asia

Supply Cabinets
Location Indonesia
Year 2021



Projects in Africa

Supply Cabinets
Location Nigeria, Africa
Year 2021



Projects in France

Supply Cabinets
Location France
Year 2021





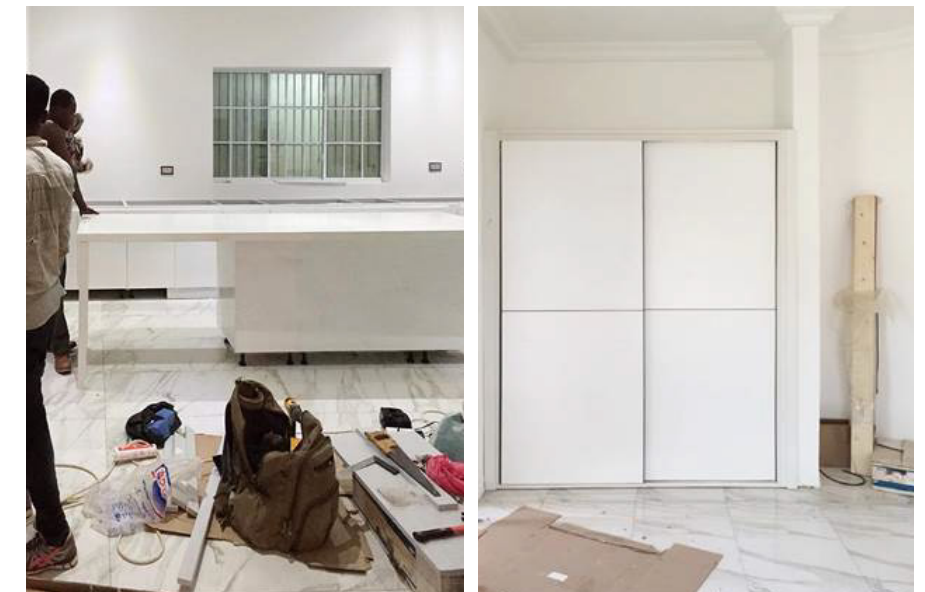
Projects in Australia

Supply Cabinets
Location Australia
Year 2020



Projects in Africa

Supply Cabinets
Location Ghana, Africa
Year 2020



Projects in Africa

Supply Cabinets
Location Ghana, Africa
Year 2021



Projects in Australia

Supply Cabinets
Location Melbourne, Australia
Year 2021



05

**QUALITY
ADVANTAGE**



P A K I T C H E N i s b o n d t o b e a

WORLD-KNOWN BRAND



Providing Customer & Partners with professional customization solutions

Product Advantage - Raw materials PA Particle Board

PA particle board only has very low formaldehyde release, can reach E0 standard, no any pungent smell. It is a moistureproof material. Its density is about 680kg/m³.



中国检验认证集团广东有限公司 CQC GUANGDONG CO., LTD.				
检验报告 REPORT OF INSPECTION 申请人/APPLICANT: 广东宜山家具有限公司/Quangong Bashan Furniture Co., Ltd. 样品名称/SAMPLE DESCRIPTION: 刨花板/Particle board. (The samples submitted by the applicant are shown as follows.)				
样品名称/Sample Name	样品规格/Sample Spec	标志/Mark	样品数量/Quantity	
刨花板/Particle board	18mm X 400mm X 400mm	0100H00005485	4-#/#-#-#-#	
接收日期/DATE OF SAMPLE RECEIVED: 2019.08.10 检测日期/TEST PERIOD: 2019.08.10-2019.08.18 检测方法/TEST REQUIREMENTS: 按照国家标准检测样品的甲醛释放量。/Determine the Formaldehyde release of the submitted sample(s) according to EN standard.				
检测项目 Test Item	检测方法 Test Method	限量要求 Limit Requirement	检测结果 Test Result	判定 Assessment
甲醛释放量 Formaldehyde Release	GB 18580 12460-6-2015	E-1/E0 E-1/E0	1.8 mg/100g Grade E	符合E1/E0 Pass
备注: 1) 本报告中文如任何异常, 应以中文为准。 Remarks: In case of divergence, the Chinese text shall be regarded as authentic.				
2) 本报告一式三份。 The report in 1 original and 2 copies.				
3) 本报告只对送检样品负责。 The test results are responsible for the inspected samples only.				
中国检验认证集团广东有限公司 CQC GUANGDONG CO., LTD. 授权签字人: [Signature] 授权签字日期: [Date]				
报告编号: 0144000780210011 页次: 1 / 1 Page 1 of 1 C 0235997				

中国检验认证集团广东有限公司 CQC GUANGDONG CO., LTD.				
检验报告 REPORT OF INSPECTION 申请人/APPLICANT: 广东宜山家具有限公司/Quangong Bashan Furniture Co., Ltd. 样品名称/SAMPLE DESCRIPTION: 刨花板/Particle board. (The samples submitted by the applicant are shown as follows.)				
样品名称/Sample Name	样品规格/Sample Spec	标志/Mark	样品数量/Quantity	
刨花板/Particle board	18mm X 400mm X 400mm	0100H00005485	4-#/#-#-#-#	
接收日期/DATE OF SAMPLE RECEIVED: 2019.08.10 检测日期/TEST PERIOD: 2019.08.10-2019.08.18 检测方法/TEST REQUIREMENTS: 按照国家标准检测样品的甲醛释放量。/Determine the Formaldehyde release of the submitted sample(s) according to ASTM standard.				
检测项目 Test Item	单位 Unit	检测结果 Test Results	限量要求 Limit Requirement	判定 Assessment
甲醛释放量 Formaldehyde Release	ppm	0.01	< 0.09	符合E0 Pass
备注: 1) 本报告中文如任何异常, 应以中文为准。 Remarks: In case of divergence, the Chinese text shall be regarded as authentic.				
2) 本报告一式三份。 The report in 1 original and 2 copies.				
3) 本报告只对送检样品负责。 The test results are responsible for the inspected samples only.				
中国检验认证集团广东有限公司 CQC GUANGDONG CO., LTD. 授权签字人: [Signature] 授权签字日期: [Date]				
报告编号: 0144000780210011 页次: 1 / 1 Page 1 of 1 C 0217296				

Bad Quality Particle Board



Bad quality particle board has high formaldehyde release with pungent smell, it is bad for health. It is not good at moistureproof so it is easy to swell in the wet weather. It will have many chips if drilling holes on it.



Product Advantage - Raw materials PA MDF Board

PA MDF board only has very low formaldehyde release, can reach E1 standard, no any pungent smell. It is a material to make shaker doors. Its density is about 730kg/m³.



中国检验认证集团广东有限公司
CQC GUANGDONG CO., LTD.

地址: 广东省广州市天河区岑村沙东大道10号
Tel: 86-20-82039000
邮编: 510630
网址: www.cqc.com.cn
CQC标志: 01002

证书编号 No: 44181909020
签发日期 Date: 2019年9月18日

检验报告
REPORT OF INSPECTION

申请人/Applicant: 广东中山宝康家具有限公司 (Guangdong Baishan Furniture Co., Ltd.)
样品名称/Sample Name: 中密度纤维板 (MDF) 规格/Specification: 18mm x 4000mm x 4000mm

送样日期/Date of sample received: 2019年08月13日 / Aug 13, 2019
测试日期/Date of Test Finished: 2019年08月28日 / Aug 28, 2019
检测项目/Test Item: 根据美国标准测试样品中的甲醛释放量 / Determine the Formaldehyde release of the submitted sample(s) according to ASTM standard.

检测项目	单位	检测结果	标准要求	检测方法	检测结果
Test Items	Unit	Test Results	Limit Requirement	Test Method	Assessment
甲醛释放量 Formaldehyde Release	mg	0.04	< 0.11	ASTM D 6907: 2014	符合标准要求 Pass

备注: 1) 本报告中文如有任何差异, 以中文为准。
2) 本报告一式三份。
3) 本报告及其附件由检测员负责。
The test results are responsible for the inspected samples only.

SHANGDONG CO., LTD.
Authorized Signatures

报告编号: 0144000078210011
第 1 页, 共 1 页 / Page 1 of 1

C 0217295

中国检验认证集团广东有限公司
CQC GUANGDONG CO., LTD.

地址: 广东省广州市天河区岑村沙东大道10号
Tel: 86-20-82039000
邮编: 510630
网址: www.cqc.com.cn
CQC标志: 01002

证书编号 No: 44181909020
签发日期 Date: 2019年9月18日

检验报告
REPORT OF INSPECTION

申请人/APPLICANT: 广东中山宝康家具有限公司 (Guangdong Baishan Furniture Co., Ltd.)
样品名称/SAMPLE DESCRIPTION: 中密度纤维板 (MDF) 规格/Specification: 18mm x 4000mm x 4000mm

送样日期/DATE OF SAMPLE RECEIVED: 2019年08月13日
测试日期/TEST PERIOD: 2019年08月19日至2019年08月28日
检测项目/TEST REQUESTED: 根据欧洲标准测试样品中的甲醛释放量 / Determine the Formaldehyde release of the submitted sample(s) according to EN standard.

检测项目	检测方法	标准要求	测试结果	单位	检测结果
Test Item	Test Method	Limit Requirement	Test Result	Unit	Assessment
甲醛释放量 Formaldehyde Release	EN 12460-5:2015	E4/E5	1.1	mg/100g	不符合标准要求 Fail

备注: 1) 本报告中文如有任何差异, 以中文为准。
2) 本报告一式两份。
3) 本报告及其附件由检测员负责。
The test results are responsible for the inspected samples only.

SHANGDONG CO., LTD.
Authorized Signatures

报告编号: 0144000078210011
第 1 页, 共 1 页 / Page 1 of 1

C 0235596

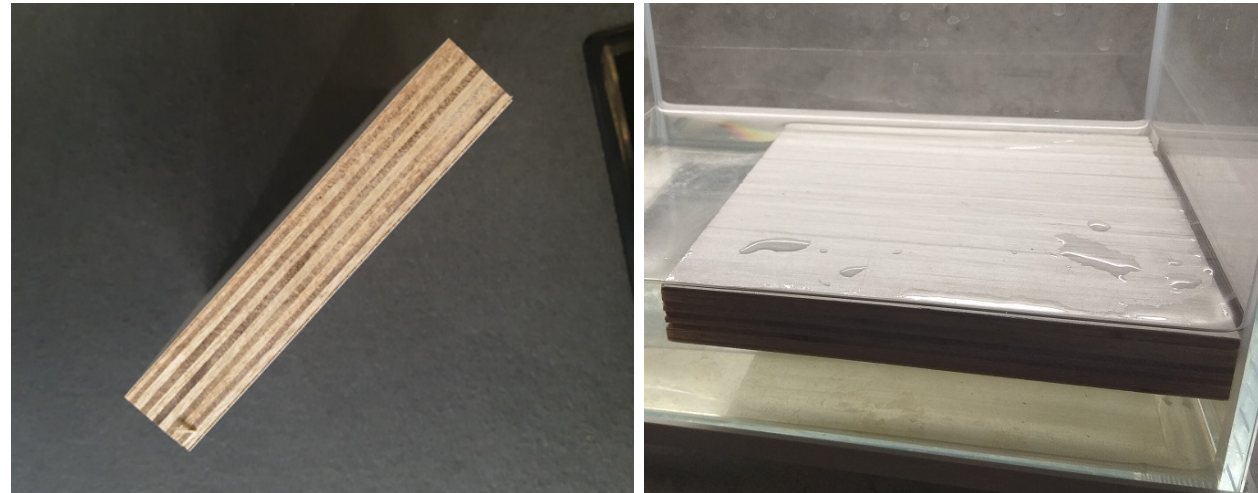
Bad Quality MDF Board

Bad quality particle board has high formaldehyde release with pungent smell, it is bad for health. It is not good at moistureproof so it is easy to swell in the wet weather. It will have many chips if drilling holes on it.



Product Advantage - Raw materials
PA Plywood Board

PA plywood has 11-layers wood and only has very low formaldehyde release, can reach E1 standard, no any pungent smell. It is very good at waterproof, the below picture is our plywood in a fish tank for more than one year, it still stick very closed, no swelling. Its density is about 640kg/m³.



中国检验认证集团广东有限公司
CQC GUANGDONG CO., LTD.

证书编号 No. 44181888832
发证日期 Date 2018年8月28日

检验报告
REPORT OF INSPECTION

申请人/Applicant: 广东中山宝隆家具有限公司/Guangdong Baishan Furniture Co., Ltd.
样品名称/Sample Name: 板材/Sample Mark: 林山板/Quantity: 10000张/10000PCS

收样日期/Date of sample received: 2018年8月15日/Aug.15,2018
测试日期/Date of Test Finished: 2018年8月28日/Aug.28,2018

检测项目/Test Requested: 测定甲醛释放量并判定等级/Determine the Formaldehyde release of the submitted sample(s) according to ASTM standard.

检测项目 Test Items	单位 Unit	检测结果 Test Results	限值要求 Limit Requirement	检测方法 Test Method	结果判定 Assessment
甲醛释放量 Formaldehyde Release	ppm	0.45	<0.85	ASTM D 6897: 2014	符合等级 Pass

备注: 1) 本报告格式如有任何改动, 概以中文为准。
2) 本报告含正本。
3) 本报告的测试项目仅限于送检样品。
The test results are responsible for the inspected samples only.

授权签字人: [Signature]
Authorized Signatory: [Signature]

电话: 86208391 9146000793210811
Page 1 of 1
C 0217298

中国检验认证集团广东有限公司
CQC GUANGDONG CO., LTD.

证书编号 No. 44181900022
发证日期 Date 2019年1月24日

检验报告
REPORT OF INSPECTION

申请人/Applicant: 广东中山宝隆家具有限公司/Guangdong Baishan Furniture Co., Ltd.
样品名称/Sample Name: 板材/Sample Mark: 林山板/Quantity: 10000张/10000PCS

收样日期/Date of sample received: 2019年09月10日
测试日期/Date of Test Finished: 2019年09月24日

检测项目/Test Requested: 测定甲醛释放量并判定等级/Determine the formaldehyde release of the submitted sample(s) according to EN standard.

检测项目 Test Item	检测方法 Test method	限值要求 Limit requirement	检测结果 Test result	单位 Unit	结果判定 Assessment
甲醛释放量 Formaldehyde release	EN 717-1:2004	E<0.124 E<0.1.20	0.022	mg/m ³	符合等级要求 Grade E

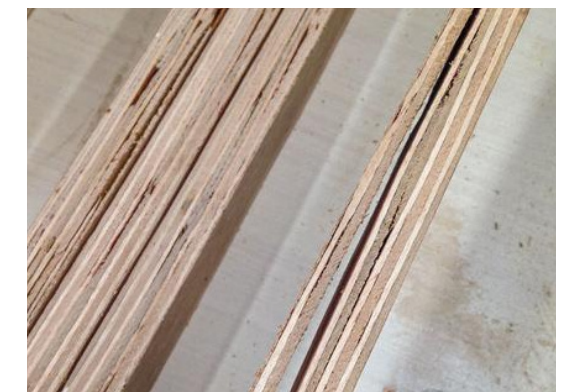
备注: 1) 本报告格式如有任何改动, 概以中文为准。
2) 本报告含正本。
3) 本报告的测试项目仅限于送检样品。
The test results are responsible for the inspected samples only.

授权签字人: [Signature]
Authorized Signatory: [Signature]

电话: 86208391 9146000793210811
Page 1 of 1
C 0241925

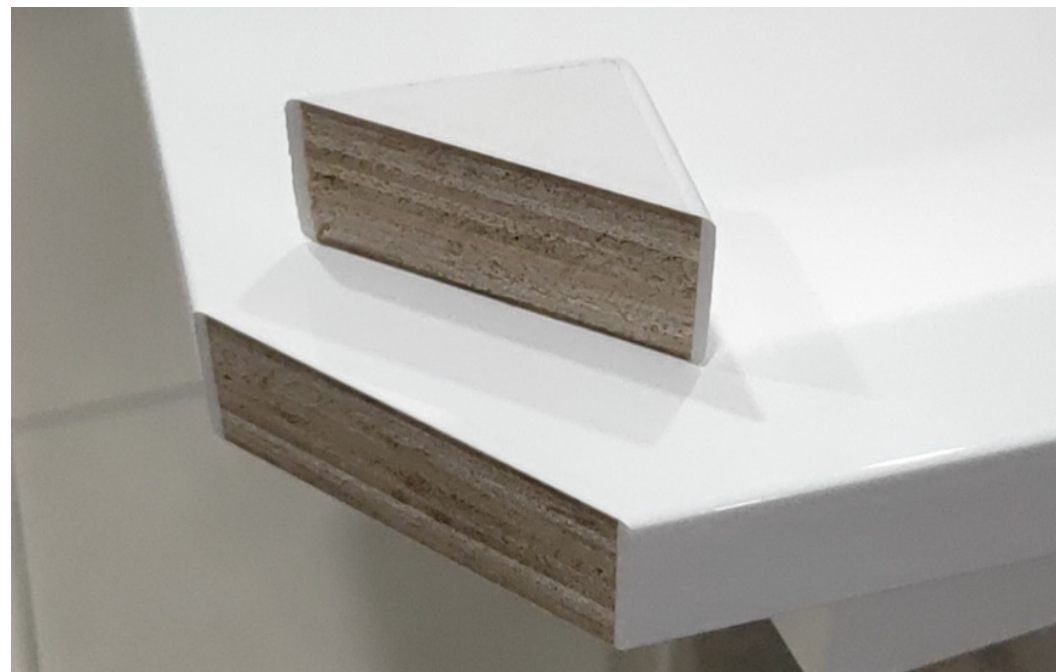
Bad Quality Plywood Board

Bad quality plywood board has high formaldehyde release with pungent smell, it is bad for health. It is not good at waterproof. It swells easily in water.

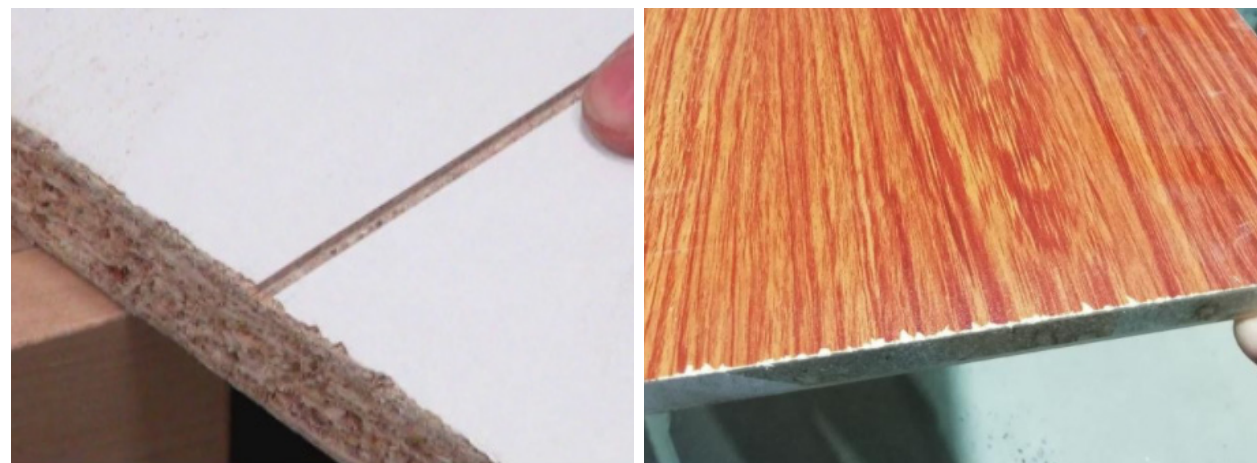


Board cutting

PA board's cutting sheet is neat and tidy, with no many chips.



Bad quality board's cutting sheet has many chips, not tidy.



Edge banding

PA PVC edge banding has strong toughness, not easily damaged;two different thicknesses of 0.6mm and 1.2mm. 1.2mm is used on the outside side of the panel, which is to prevent damage caused by closing the door. The three inside sides are 0.6mm, which can make the cabinet connected more closely;no glue mark on the board,the pvc edge is not easy to peel off,no bad smell.

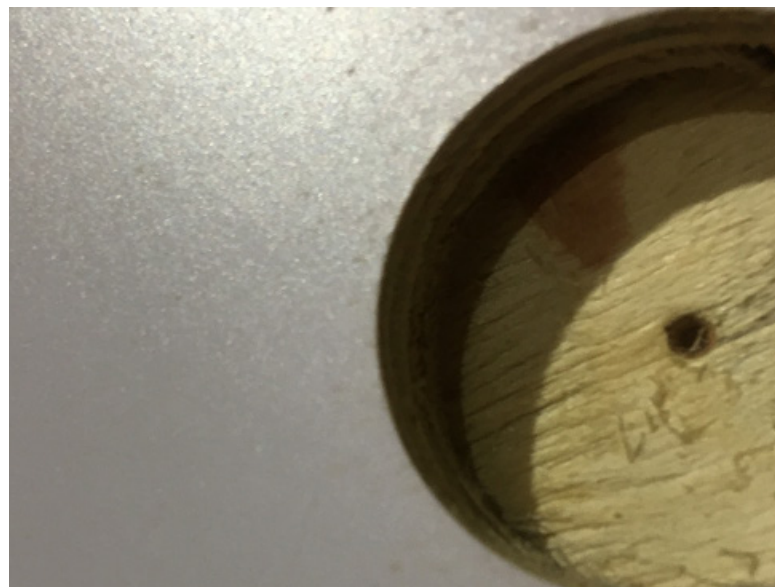


Bad quality edge is fragile and easy to be broke; all sides edges are 0.6mm thick; bad glue smell;the edge is easy to peal off.



Drilling

PA drilling hole is tidy and position exact, more convenient for installation.



Bad quality machine drilling hole edge is not tidy, and the hole position is not exact. It will be a big problem for installation.



Melamine

PA melamine board is scratch resistant, even we use an iron brush to brush it, the surface still looks good installation.



Bad quality melamine board is not scratch-resistant, it will have scratches once it is touched a hard thing.



UV

PA UV board surface looks similar with lacquer.



PVC

PA PVC has many color selections, the thickness of PVC film is 0.035mm, it can be used for 15 years long. PA uses German glue which is a very important material for PVC products, with high adhesion which makes the PVC film strongly stick on the panel, and hard to shell off. The door shape can be flat and shaker, it's very similar to solid wood.



Lacquer

PA lacquer has an even color, a smooth surface without bubbles, a good mirror effect, not easy to drop paint.

Glossy lacquer: 3 layers base coats and 3 layers top coats;

Matt lacquer: 3 layers base coats and 2 layers top coats;

Process of each layer: polishing - painting - drying. It needs at least 8 hours for each layer process.

Even using for years,our lacquer will not have color difference.



Bad Quality MDF Board

Back quality lacquer has uneven color and the surface looks very bad, easy to drop paint.Only three to four layers of lacquer coats.It is easy to have color differences after using it for times.



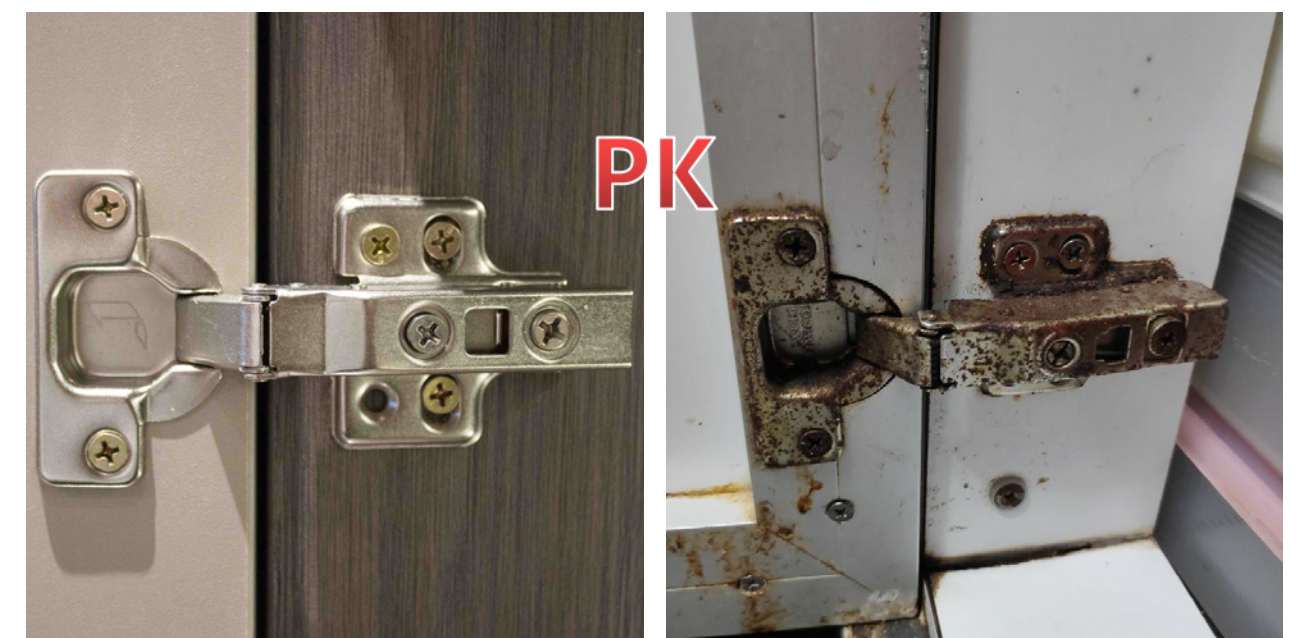
Timber Veneer

PA timber veneer has 7-8 layers lacquer painting;
Glossy lacquer: 4 layers base coats and 4 layers top coats;
Matt lacquer: 4 layers base coats and 3 layers top coats;
Process of each layer: polishing - painting - drying.
The hardness can reach 4H.
Smooth surface without bubbles, good mirror effect, not easy to drop paint.



Hardware-Hinge

PA hinge has a soft closing system, long service life, strong bearing capacity, not easy to rust.



Hardware-Drawer slider

PA drawer slider has soft closing, strong bearing capacity, smooth slider. It can bear more than 45kg weight. Actually, we tried to stand in it has no any problem.



They are able to withstand more than 45kg of weight.

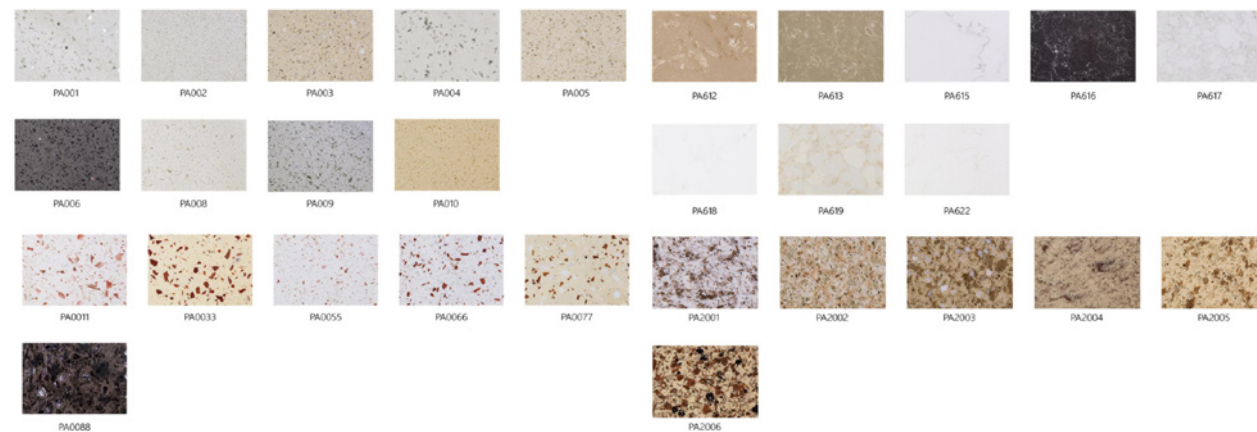
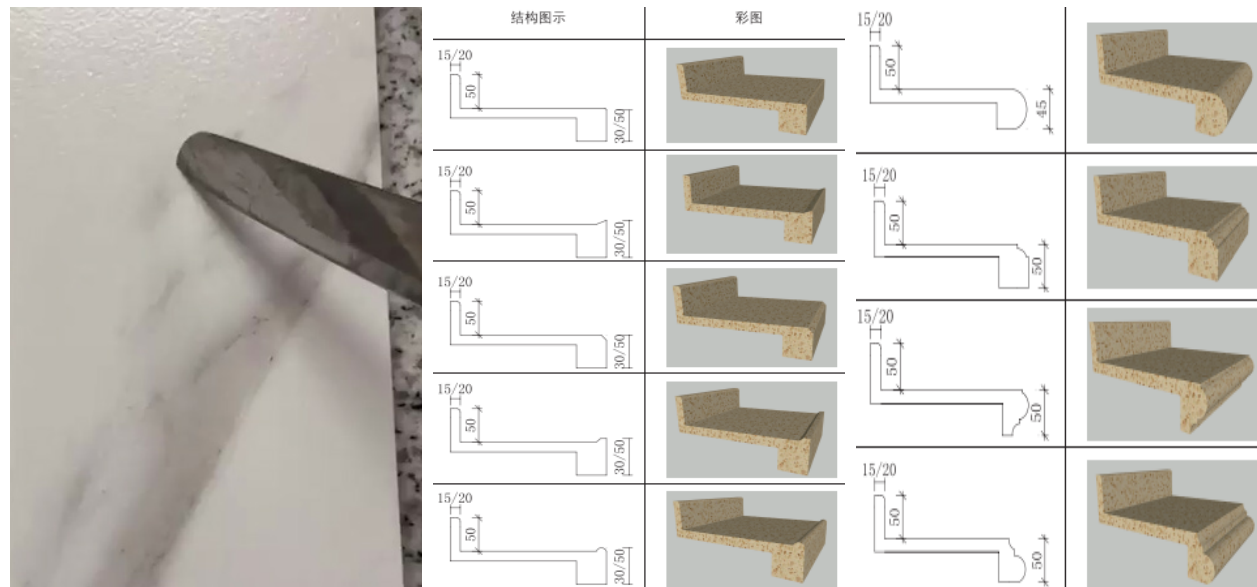
Hardware-Sliding door slider

PA sliding door slider has soft closing, strong bearing capacity, smoothly slide.



Product Advantage - Raw materials
Countertop

PA countertop all are artificial quartz, strong hardness, too hard to scratch and break, heat-resisting and hard to be stained. There are a variety of countertop colors and patterns. The countertop edge shape can be customized according to client's requirement.



06

**PA KITCHEN
MUCH MORE THAN
AN OUTSTANDING**



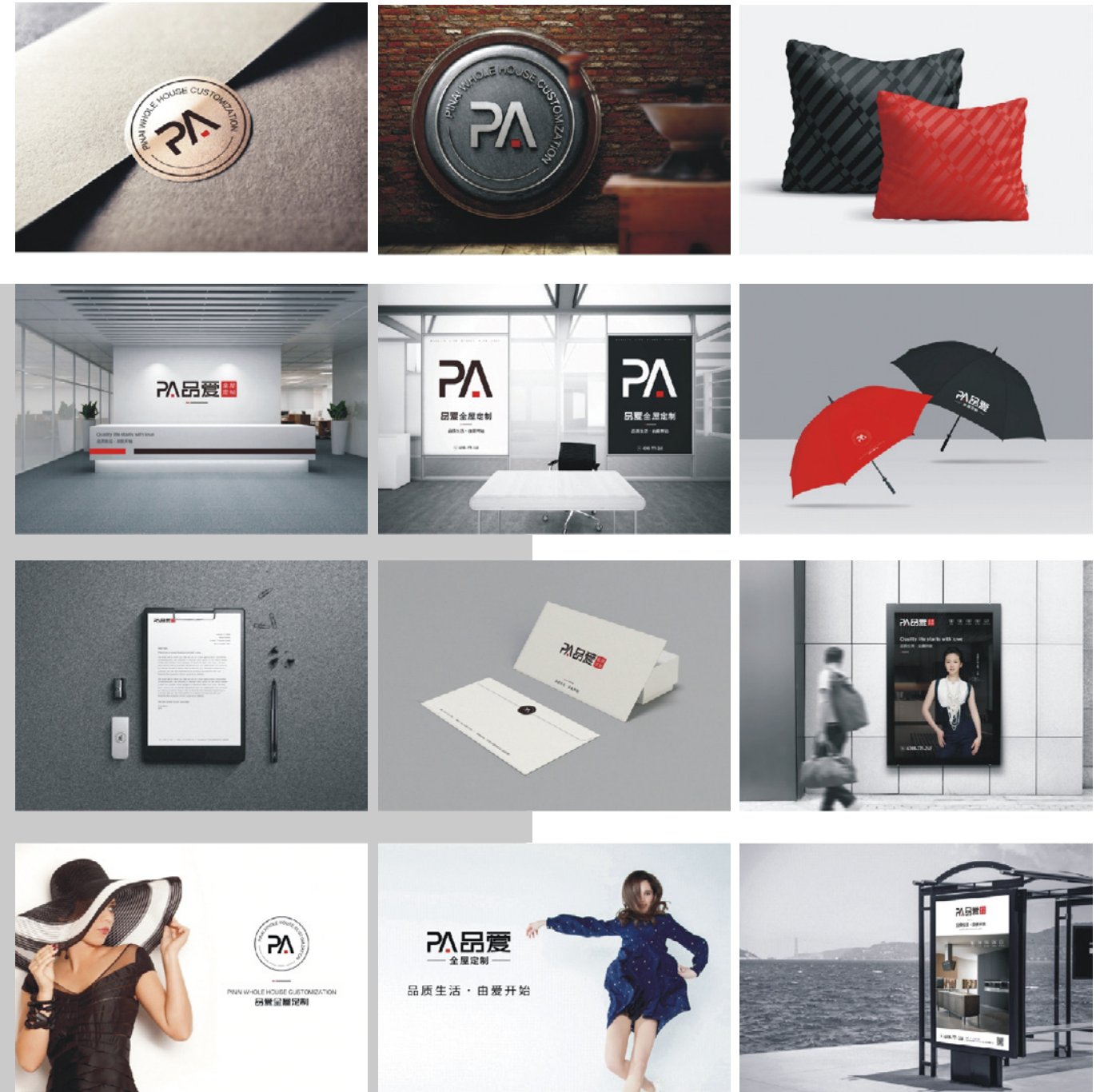


BRAND INTRODUCTION

PA KITCHEN, founded in 2008, it is a combination of perfect and art. PA KITCHEN has the spirit of pursuing perfection and art, starting from the kitchen, making love and food the theme of life. It expresses emotions with heart and love, and creates home furnishing products that are as delicate and perfect as works of art. In 2014, PA KITCHEN spread to the whole-house customization, taking quality, design and innovation as the first criteria, adhering to the brand concept Quality life starts with love. It provides consumers with high-quality life experience by high-quality whole-house customized products and solutions. PA KITCHEN always strives to create a warm and loving home for all partners and customers all over the world.



PA BRAND VISUAL IDENTITY (VIS)



BRAND VIS IMAGE SPECIFICATION

COMPANY
CULTURE



Brand Concept

With the core concept of "Quality life starts with love", to customize new comfortable and warm home furnishing products; with the premise of ensuring quality, adhering to the "customer first" service, and the "people-oriented" business philosophy, to care and eliminate barriers for customers with professionalism and high efficiency.

Spirit

Be determined to make progress, aims to continuously meet market demand, point out the direction of research and development, and lead the industry with new ideas and new models.

Mission

Pursue perfect quality and provide customers with high-value products;
Provide a platform for colleagues to make progress;
Improve the quality of life and contribute to social progress.

Objective

Aims to serve customers based on a high degree of corporate social responsibility.

Vision

Take the lead in the industry

SOCIAL RESPONSIBILITY



Giving back to the society PA KITCHEN actively fulfills its social responsibilities

As a powerful brand in China's home furnishing industry, PA KITCHEN shoulders the corporate responsibility of "carrying up the national flag of the customized home furnishing industry" and actively participates in the call for public welfare and poverty alleviation, contributes to the country and gives back to the society.

The poverty was initiated by China Furniture Decoration Chamber of Commerce in conjunction with national and local industry organizations. PA KITCHEN actively organizes all employees of the company to participate in poverty alleviation actions, and has been recognized by the Chamber of Commerce and the industry.

OUR BRAND HONOR



Guangdong Custom Home Furnishing Association



Federation of Industry and Commerce Furniture Decoration Industry Chamber of Commerce

15 Years witnesses strength

Honor comes from strength, and diligence creates brilliance. After eleven years of hard work, PA KITCHEN has achieved fruitful results. It has achieved steady growth and development with a 60% increase for eleven consecutive years. The product was awarded the best fashion product, and it was strongly logged on the central station Discovery Journey-Fortune Forum.

PA KITCHEN Design and Production System was put into use, the international intelligent production line was introduced. The two-dimensional code was used to track the whole process and put it into the ERP management system. And the opened The terminal function is used for the client inquiry system for production follow-up. The brand has also won many awards such as Top Ten Cabinetry Brands of Chinese, Top Ten Export Brands, and The Most Valuable Brand Award for Investment.

OUR FUTURE



HONOR CERTIFICATE



China's top ten export brands



Top ten Whole House Custom Brands



Top ten Cabinet Brands



Cabinet Manufacturer Supplier



High-quality whole house customization supplier



Contract-abiding and credit-worthy enterprise



Top ten brands of cabinets



Satisfaction Award from Arab Customer



Distributors recommend the brand



Top ten Brands for Whole House Customization Services

QUALIFICATIONS & CERTIFICATIONS

Honor comes from strength, and heart creates brilliance Ten years of hard work, PA KITCHEN has achieved fruitful results.



Board European standard certification



ISO9001 Certification



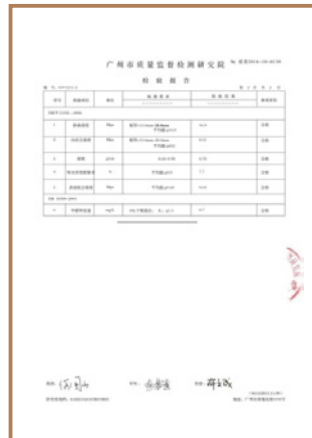
Certificate of Exit Registration



Certification from China Certification & Inspection Group



Quality Inspection Report 1



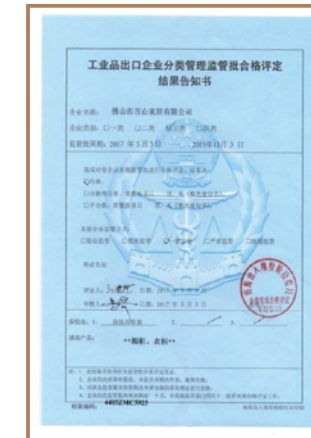
Quality Inspection Report 2



ENF test report



Inspection & Certification Report



China Custom Entry and Exit Certification